


TRIXIE LED TABLE LAMP

SKU# 269750, 269751

Rated Voltage 12V  1A

Thank you for purchasing this quality Lucci product. To ensure correct function and safety, please read and follow all instructions carefully before assembly, installation and use of this product. Please keep the instructions for future reference.

Warranty

- This portable luminaire is covered by a 3-year warranty valid for in-store replacement or refund only.
- The warranty period starts from the date of purchase. Please retain the proof of purchase.
- Warranty will be void if there is any damage due to improper usage or modification to the portable luminaire.
- Failure to comply with the instructions in this manual may increase the risk of damage or injury and will void the warranty.

Installation Requirements

- Select a suitable location for this portable luminaire;
 - Ensure it is on a flat and stable surface.
 - This portable luminaire is suitable for indoor use only.
 - Do not place flammable material near or over the portable luminaire.
 - Ensure the portable luminaire is not installed in direct line of an air vent/system.
 - If the portable luminaire is placed in an area prone to moisture, ensure that the area is well ventilated, and an appropriately rated exhaust fan is used if required. Damage or corrosion caused by moisture is not a product fault, and as such is not covered under warranty.
- Only use the supplied plug in LED driver with this portable luminaire.
- Take care not to pull any electrical wires during unpacking as this may damage the connection.
- Lay out all the components on a smooth surface and make sure there are no components missing before assembling. If parts are missing, return the complete product to the place of purchase for inspection or replacement.
- Check whether the luminaire has been damaged during transport. Do not operate/install any product which appears damaged in any way. Return the complete product to the place of purchase for inspection, repair or replacement.
- Do not plug into the mains power socket-outlet before or during assembly. Only do so after the portable luminaire is fully assembled and is ready to use for the first time.

Installation Directions

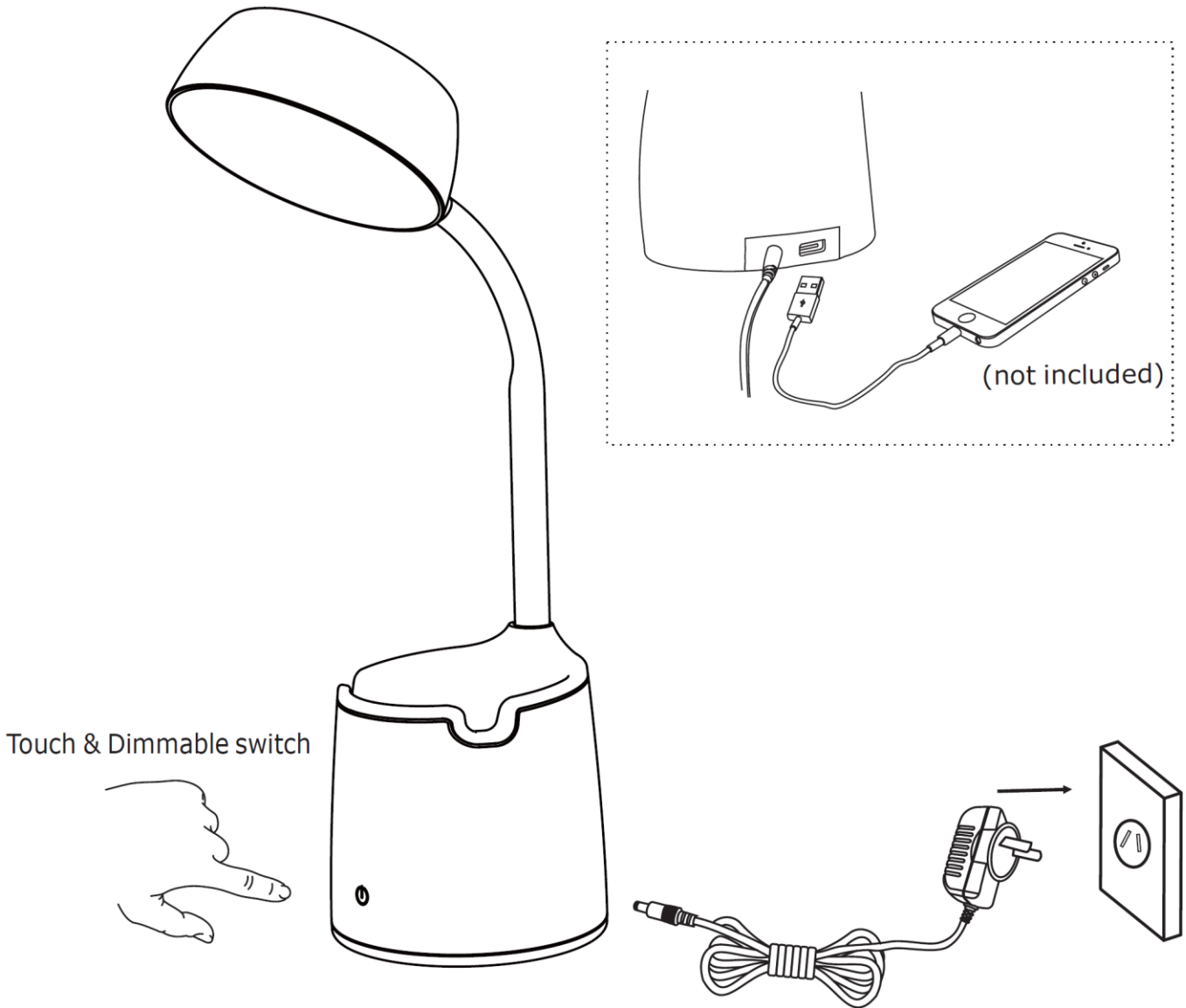
1. Remove all packaging material from the portable luminaire.
 2. Select a suitable location for the portable luminaire. See the installation requirements above.
 3. Adjust the lamp head of the portable luminaire to the desired angle.
- NOTE: When adjusting the lamp head do not bend more than 180° as this may damage the internal wires.**
4. Insert the plug into the connector at the base of the portable luminaire.
 5. Insert the LED driver into the mains power socket outlet and ensure it is fully plugged in.
 6. Turn power on at the mains power socket outlet.
 7. Press the touch switch to operate the portable luminaire. The touch switch is setup to 3-step dimming mode.
(10% → 50% → 100% → off)

- Press the touch switch once, and the luminaire will turn on and light up at approximately 10% brightness.
- Press the touch switch a second time, and the luminaire will light up at approximately 50% brightness.
- Press the touch switch a third time, and the luminaire will light up at 100% brightness.
- Press the touch switch a fourth time, and the luminaire will turn off.

OPERATION OF THE USB CHARGER:

You can charge your electronic device via the USB output at the base of the luminaire. The USB output is rated 5VDC 1A. (Refer to the instruction manual of your electronic device for the required charging current)

NOTE: If the charge current of your device is over the limit of the rated current, the charger will be self-protected. In this case, your device will not charge unless you reconnect according to the rated output

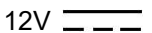


NOTE: When adjusting the angle of the lamp head, do not bend more than 180° as this may damage the internal wires.

Safety Tips

- Always ensure the power is OFF and the portable luminaire has cooled down before performing any maintenance, cleaning or making any adjustment to the portable luminaire.
- To avoid injury or damage to the portable luminaire, ensure that power leads are secure before connecting the power.
- Young children should be supervised to ensure that they do not play with the portable luminaire.
- The light source of this luminaire is not replaceable; when the light source reaches its end of life the whole luminaire shall be replaced. There are no serviceable parts, do not attempt to dismantle or open the luminaire.
- If the external flexible cable or cord of this luminaire is damaged, it shall be exclusively replaced by the manufacturer or his service agent or a similar qualified person in order to avoid a hazard.
- Handle the portable luminaire and shade with care to avoid any damage or breakage.
- Select a suitable location away from liquids and hazards.
- To clean, wipe with a soft damp cloth. Do NOT soak or immerse the luminaire in water or other liquids.
- Ensure that the luminaire does not come in contact with corrosive chemicals/solvents or abrasive cleaners etc..

Specifications

| SKU # | 269750 | 269751 |
|---------------|--|--------|
| Colour | Black | White |
| Rated Voltage | 12V  1A | |
| Rated Wattage | 12W | |
| LED Specs | 350 Lumens, 3000K Warm White, 3-step Dimmable, CRI >80 | |
| USB Output | 5VDC 1A | |
| Weight | 0.7kg | |
| Dimensions | H:315mm Dia:108mm | |