

## LUCCI CONNECT PUSH BUTTON LIGHT DIMMER

SKU# 299043

Rated Voltage 220-240V~ 50Hz

Thank you for purchasing this quality Lucci product. To ensure correct function and safety, please read and follow all instructions carefully before using the product. Please keep instructions for future reference.

### Warranty

- This Light Dimmer is covered by a 2-year warranty. The warranty is from date of purchase, not the date of installation.
- If the Light Dimmer is not assembled and installed by a licensed electrician, the warranty will be void.
- Please retain the proof of purchase and evidence of installation by a licensed electrician for any warranty enquiries.
- Warranty will be void if there is any damage due to improper usage or modification to the Light Dimmer.
- Failure to comply with the instructions in this manual may increase the risk of damage or injury and will void the warranty.

### Installation Requirements

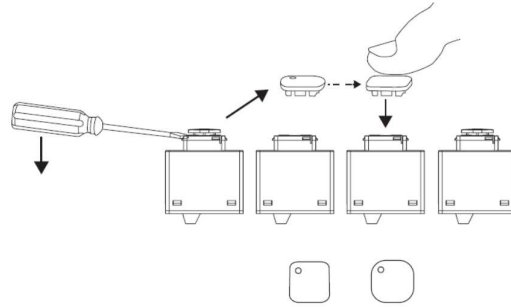
- **Must be installed by a licensed electrician and in accordance with AS/NZS3000 (the latest edition).**
- **This is a Trailing Edge Light Dimmer. It is designed to be ONLY used with LED loads.**  
**WARNING: This Light Dimmer is NOT suitable for Ferromagnetic Transformer, Fluorescent lights and Resistive Load (e.g. Incandescent & halogen lamps).**
- This Light Dimmer is recommended to be used with Lucci brand dimmable LED fittings. Where the loads are on the same electrical circuit, it must be the Mains 240V dimmable LED retrofit luminaires, which have a dimmable LED driver. (Note: A dimmable electronic transformer is not considered to be a dimmable LED Driver).
- Problems encountered when using other types of dimmable 240V luminaires NOT recommended in this installation guideline are NOT covered by warranty.
- Ensure the minimum rated output load **Min.2W** is achieved. Do not exceed the rated output load **Max.180W**.
- Do not exceed the rated power input specification.
- This product is suitable for indoor use only.

### Installation Preparation

Before carrying out the installation, the following must be considered:

- Wall plate or wall mounting box (not supplied) will be required for installation pending on where the dimmer will be located, e.g. behind a wall or surface mounted.
- Additional covers of the push button are provided, which can be replaced based on the shape and color of your wall plate. Refer to Fig 1. **NOTE:** The push button must be covered before switching on the power.
- A wall switch is required (not supplied) when using with this dimmer to provide ON/OFF and isolation to the electrical lighting equipment circuit. The dimmer **MUST** not be used as an ON/OFF switching device. Only use as a dimmer.
- Ensure the power to the electrical circuit is switched OFF.
- All electrical wiring connection & disconnection must be in accordance with Australian & New Zealand wiring rules, e.g. AS/NZS 3000 (the latest edition).

**CAUTION: For your safety, this Lucci Connect Light Dimmer must be installed by a licensed electrician.**



**FIGURE 1. Replacement of the cover for push button**

## Installation Directions

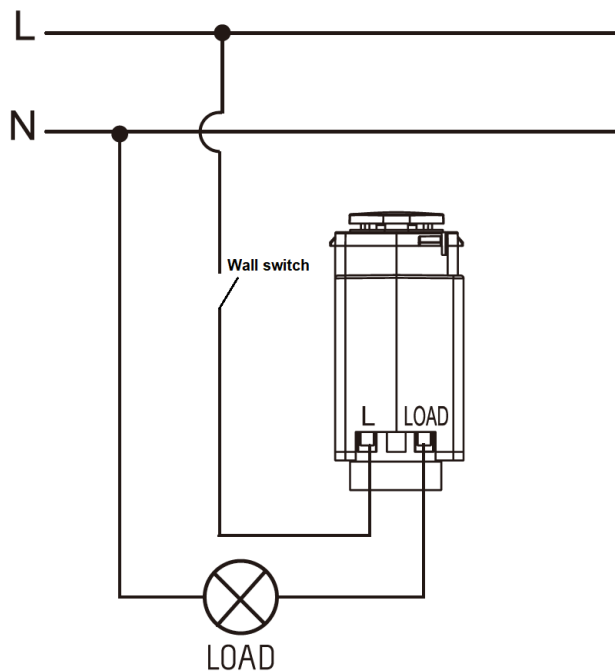
**WARNING – HIGH VOLTAGE**

- **For your safety: Power to the circuit must be disconnected or switched off.**
- **Household power can cause SERIOUS INJURY or DEATH.**
- **Wiring must meet all local and national electrical wiring codes.**

### MAKING THE ELECTRICAL CONNECTIONS (see Fig.2)

1. Disconnect electrical power from the working circuit.
2. Connect 240V ~ mains **L** to **L** of the dimmer.
3. Connect **LOAD** of the dimmer to the **LOAD**.
4. Connect the **LOAD N** to the 240V~ mains **N**.

(Note: More LED type LOADs can be connected in series, up to the maximum allowable per LOAD type outline in the “installation requirements” section of this manual.)

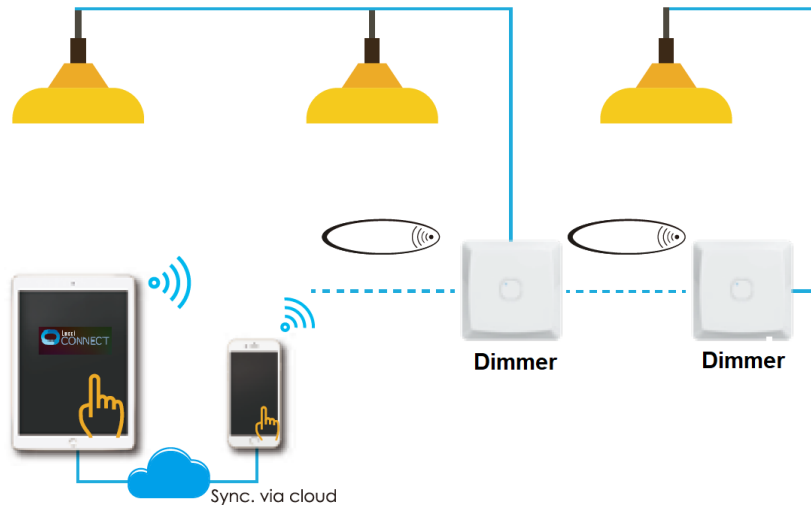


**Note: An isolation wall switch must be included in the wiring installation. The switch allows disconnecting of the dimmer and loads from the mains 240VAC power during maintenance and cleaning of the LED lighting equipment.**

**FIGURE 2. Wiring Diagram**

## In-App control & operation

Turn on the mains power then set up the wireless & in-app control according to the '**Lucci CONNECT user guide**'.



**NOTE:** Turn on the Bluetooth function of your mobile phone/tablet before setting up.

**NOTE:** It is required to use with Lucci gateway (SKU# 299075, sold separately) to control via the internet or achieve voice control via Google Home/ALEXA.

**NOTE:** The maximum communication range is 20M without barrier. However, the SKU# 299043 light dimmer uses mesh network technology so each device act as a repeater. Longer ranges can be achieved by using multiple devices.

### **Minimum brightness set up and reset:**

- Short press the button five times quickly to set minimum brightness while the light is set to your desire minimum brightness. The indicator will blink 5 times;
- Short press the button seven times quickly to reset default minimum brightness. The indicator will blink 7 times;
- Short press the button nine times quickly to restore the factory default settings and reset to the unpair mode.

### **Alternatively, the Light dimmer can also be operated manually:**

- Short press the button once to turn On/Off;
- Long press the button to dim up or down;
- Short press twice quickly to turn on the light at the maximum brightness.

Troubleshooting		
SYMPTOMS	PROBABLE CAUSES	SUGGESTED REMEDY
<b>The dimmer is not operating.</b>	The switch on the dimmer circuit has been turned OFF.	Check the switch to the dimmer circuit and switch ON.
	Mains power is not restored to lighting circuit & dimmer.	Replace the fuse or turn ON circuit breaker at the switch box.
<b>The Lamps / Luminaires flickers when the dimmer is at maximum or minimum.</b>	The LED load does not receive enough electrical voltage/current because Minimum/Maximum loading on the dimmer circuit is not met, and flickering can occur while dimming at minimum or maximum.	Increase/remove the loading by adding/removing more LED product onto the same dimming circuit, so that the dimmer load is within specification. Refer to technical specification.
	The LED lamp/luminaire connected is not dimmable type.	Change to dimmable LED lamp/luminaire. Recommend to use with Lucci brand LED dimmable fittings.
<b>Dimming range is not good. Cannot dim LED load to minimum brightness.</b>	The minimum brightness is not set up correctly.	Short press the button seven times quickly to reset default minimum brightness. Then set up your desired minimum brightness again according to the instruction.

Specifications	
<b>SKU# 299043</b>	
<b>Dimmer Input</b>	
<b>Rated Voltage</b>	220-240V AC
<b>Frequency</b>	50 Hz
<b>Dimmer Output</b>	
<b>ONLY Suitable for LED Loads Recommend to use with Lucci brand LED dimmable fittings</b>	Min.2W – Max.180W
<b>Dimming method</b>	Trailing-Edge
<b>Dimming range</b>	1% - 100%
<b>Max communication range</b>	20m
<b>Colour</b>	White / Black * *Additional covers of the push button are supplied in black color.
<b>Dimension</b>	49 x 40 x 22.5 mm