

GLASS GPO

SKU# 299081, 299082

Rated Voltage 220V - 240V~ 50Hz

Thank you for purchasing this quality Lucci product. To ensure correct function and safety, please read and follow all instructions carefully before assembly, installation and use of this product. Please keep instructions for future reference.

Warranty

- This product is covered by 12-month warranty. The warranty is from date of purchase, not the date of installation.
- If this product is not assembled and installed by a licensed electrician, the warranty will be void.
- Please retain proof of purchase and evidence of installation by a licensed electrician for any warranty enquiries.
- Warranty will be void if there is any damage due to improper usage or modification to the product.
- Failure to comply with the instructions in this manual may increase the risk of damage or injury and will void warranty.

Installation Requirements

- This switch must be assembled and installed by a licensed electrician.
- All wiring and installation of the luminaire must adhere to the latest local and national wiring rules.
E.g. AS/NZS 3000 Electrical Installations.
- Select a suitable location for installation:
 - This product is suitable for indoor use only.
 - Ensure this product is not installed in direct line of an air vent/system.
 - If installing the product in an area prone to moisture, ensure that the area is well ventilated and an appropriately rated exhaust fan is used if required. Damage or corrosion caused by moisture is not a product fault, and as such is not covered under warranty.
- Lay out all the components on a smooth surface and make sure there are no components missing before assembling.
- If parts are missing, return the complete product to the place of purchase for inspection or replacement.
- Check whether the product has been damaged during transport. Do not operate/install any product which appears damaged in any way. Return the complete product to the place of purchase for inspection, repair or replacement.
- Remove all packaging material from the product and be careful not to throw away accessories that may be hidden within the packaging material.


WARNING: Switch OFF the electrical power of your circuit breaker on the switchboard before commencing installation.

1. Remove all packaging material from the product and be careful not to throw away accessories that may be hidden within the packaging material. (Fig. 1)
2. Remove the faceplate by inserting a flat head screwdriver into the tab on the side of the product. (Fig. 2)
3. Connect the mains power supply to the back of the GPO. (Fig. 3)
4. Install the GPO onto solid surface and ensure it is secure. (Fig. 4)
5. Install the faceplate back onto the GPO.

NOTE: Do not turn on the mains power until the faceplate is securely installed onto the GPO.

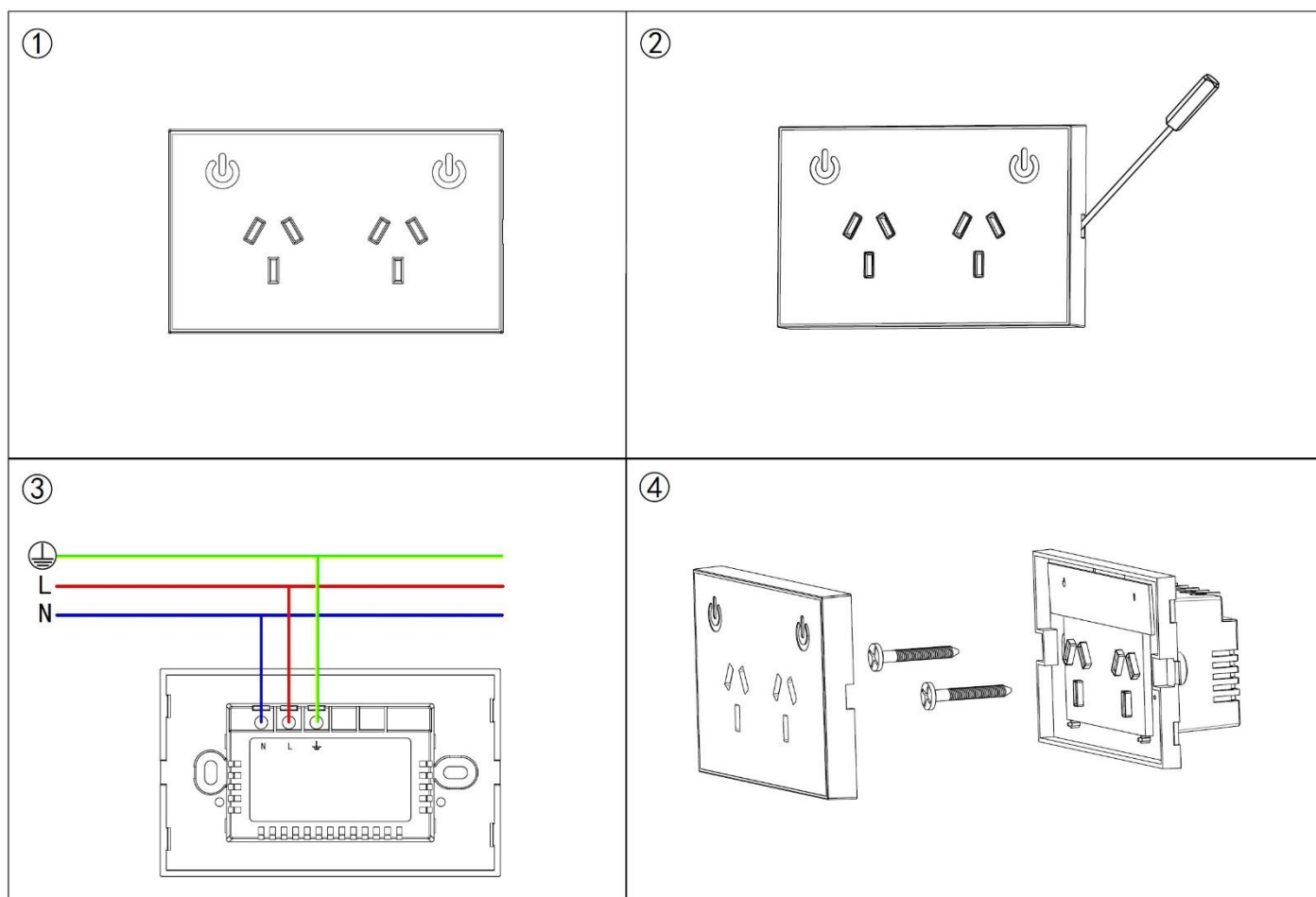
OPERATION:

Turn on the mains power then set up the Wi-Fi control according to the 'Lucci CONNECT user guide'.

The GPO can also be turned ON/OFF manually by touching the  on the faceplate.

When the socket outlet is ON, there will be a blue light.

When the socket outlet is OFF, there will be no blue light.



Safety Tips

- Exercise extreme caution when installing the switch, and always turn off electrical power at the main circuit breaker before installing or removing the faceplate.
- Young children should be supervised to ensure that they do not play with the switch.
- Select a suitable location away from liquids and hazards.
- Do NOT soak or immerse the product in water or other liquids.
- Ensure the product does not come in contact with corrosive chemicals/solvents or abrasive cleaners etc.

Specifications

SKU #	299081	299082
Colour	White	Black
Rated Voltage	220 - 240V~ 50Hz	
Rated Load	10A, 2400W Max.	
Suitable Load	Resistive load	
Weight	0.2kg	
Dimensions (With faceplate)	W:118mm H:72mm E:43mm	
Frequency	Wi-Fi frequency: 2.4GHz	