

PIP LED STEP LIGHT

SKU# 300615, 300616, 300617

Rated Voltage 220-240V~ 50Hz

To ensure correct function and safety, please read and follow all instructions carefully before assembly, installation and use of this luminaire. Please keep instructions for future reference.

Warranty

- This luminaire is covered by a 3-year warranty. The warranty is from date of purchase, not the date of installation.
- The warranty period starts from the date of purchase, not the date of installation. Please retain the proof of purchase.
- Warranty will be void if there is any damage due to improper usage or modification to the recessed luminaire.
- Failure to comply with the instructions in this manual may increase the risk of damage or injury and will void the warranty.

Installation Requirements

- This luminaire must be assembled and installed by a licensed electrician.
- All wiring and installation of the recessed luminaire must adhere to latest local and national wiring rules. e.g. AS/NZS 3000 Electrical Installations. If unsure, please contact a licensed electrician.
- This luminaire is a Class II product and must be maintained during wiring and installation.
- Select a suitable location for installation;
 - This luminaire is suitable for indoor use only
 - The mounting point must support 2 times the weight of the luminaire.
 - If installing the recessed luminaire in an area prone to moisture, ensure that the area is well ventilated and an appropriately rated exhaust fan is used if required. Damage or corrosion caused by moisture is not a product fault, and as such is not covered under warranty.
- This luminaire is classified as Do-Not-Cover. A recessed luminaire than can be used where normally flammable materials, including building insulation, are or may be present, but cannot be abutted against any material and cannot be covered in normal use.
- The LED driver is classified as Do-Not-Cover. An independent control gear that can be used where normally flammable materials, including building insulation, are or may be present, but cannot be abutted against any material and cannot be covered in normal use
- The LED driver must be placed at least 10mm away from the LED downlight module to allow for cooling.
- The LED downlight module is only suitable for use with LiFud LF-GIR003YSII0350H driver.
- Take care not to pull any electrical wires during unpacking as this may damage the connection.
- Lay out all the components on a smooth surface and make sure no components are missing before assembling. If parts are missing, return the complete product to the place of purchase for inspection or replacement.
- Check whether the luminaire has been damaged during transport. Do not operate/install any product which appears damaged in any way. Return the complete product to the place of purchase for inspection, repair or replacement.
- Ensure power to the circuit you are working on has been switched OFF before commencing any electrical work.

Installation Directions

1. Remove all packaging material from the product and be careful not to throw away accessories that may be hidden within the packaging material. (Fig. 1)
2. Cut an installation hole of \varnothing 50mm into the wall. (Fig.1)
3. Connect the mains supply wire to the input side of the LED driver. (Fig.2)

Mains Supply Wire

Live – Brown or Red
Neutral – Blue or Black

LED driver input

AC-L
AC-N

NOTE: This luminaire is a Class II product and must be maintained during wiring and installation.

NOTE: Ensure the mains supply wire connection to the LED driver is double insulated.

NOTE: Cables or wires of different voltage systems (e.g. Low Voltage and SELV), must be separated by double insulation.

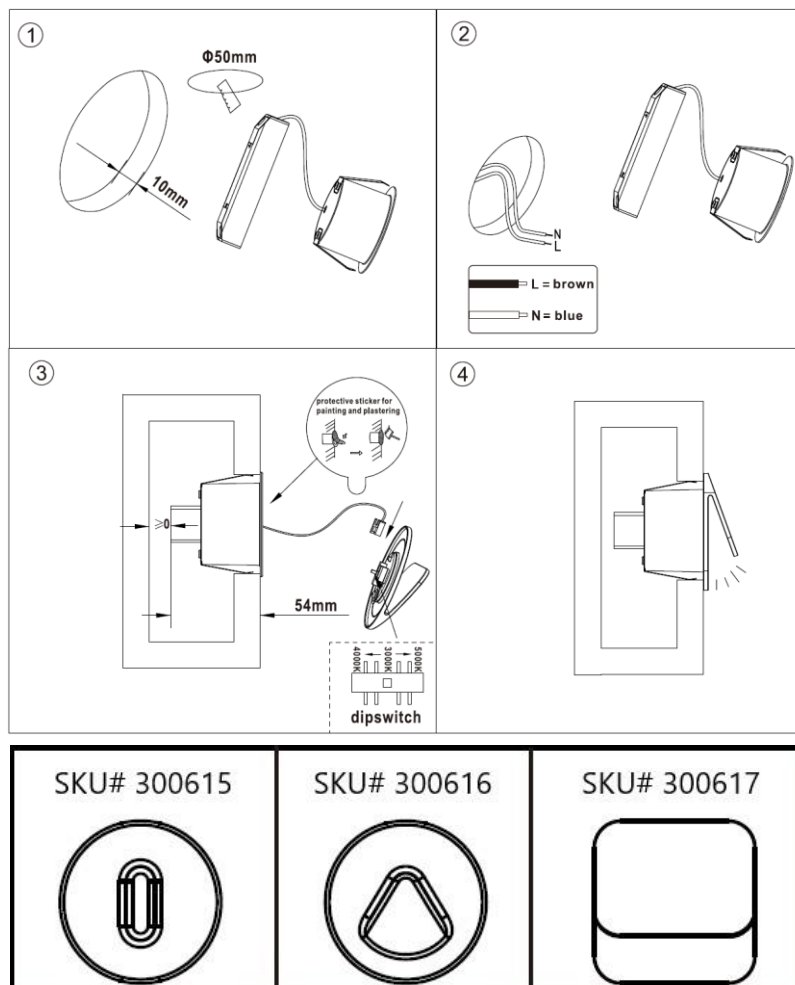
4. Push the springs in and place the recessed luminaire through the cut-out hole and into the wall. (Fig.3)

NOTE: Keep the luminaire at least 10mm away from the LED driver to allow for cooling. (Fig.5)

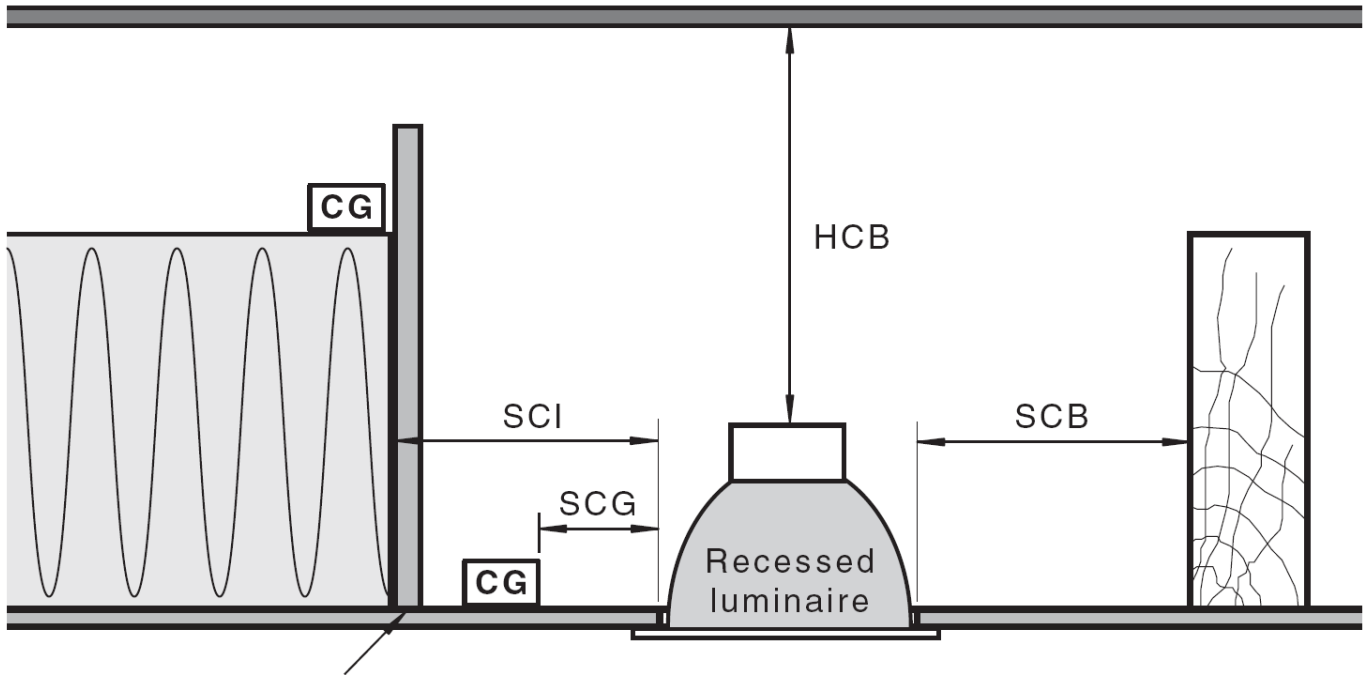
NOTE: The required depth for this luminaire is 54mm. (Fig. 3)

5. Select your desired colour temperature by using the dip switch.
6. Connect the quick connector from the luminaire to the front shade.
7. After the installation, switch on the luminaire to test all the lighting functions and enjoy your new lighting product.

NOTE: This luminaire is classified as a Do-Not-Cover luminaire. A recessed luminaire than can be used where normally flammable materials, including building insulation, are or may be present, but cannot be abutted against any material and cannot be covered in normal use.



Clearance Information – AS/NZS 3000 Wiring Rules



FIXED GUARD REQUIRED WHERE:-

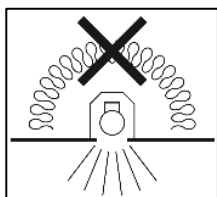
- insulation materials are not secured in position;
- loose materials are present.

LOCATION	DISTANCE	DESCRIPTION
SCG	10mm	(Side clearance to control gear) Minimum distance between the side of the recessed luminaire and any auxiliary equipment/driver/transformer/control gear.
SCB	10mm	(Side clearance to building element) Minimum distance between the side of the recessed luminaire and any building element.
SCI	10mm	(Side clearance to insulation) Minimum distance between the side of the recessed luminaire and any building insulation.
HCB	10mm	(Height clearance to building element) Minimum distance between the top of the recessed luminaire and any building element above it.

WARNING — RISK OF OVERHEATING OR FIRE IF THE CLEARANCE DISTANCES ARE COMPROMISED.

RISK OF FIRE – BUILDING INSULATION MUST NOT COVER THIS LUMINAIRE
 HCB = 10mm MIC = 10mm SCB = 10mm SCI = 10mm

Do-Not-Cover Rating – AS/NZS 60598.2.2: 2016 (Recessed Luminaire)



A recessed luminaire that can be used where normally flammable materials, including building insulation, are or may be present, but cannot be abutted against any material and cannot be covered in normal use.

The declared Do-Not-Cover classification is based on the default testing ambient temperatures 25°C according to the standard.

Building insulation and building elements do not cover and do not abut to the top and sides of the luminaire. See the minimum clearance values required.

Do-Not-Cover Classification – AS/NZS 61347.1:2016 (Control Gear)

An independent Control Gear that can be used where normally flammable materials, including building insulation, are or may be present, but cannot be abutted against any material and cannot be covered in normal use.

Safety Tips

- Always ensure the power is OFF and the recessed luminaire has cooled down before performing any maintenance, cleaning or making any adjustment to the recessed luminaire.
- The light source of this luminaire is not replaceable; when the light source reaches its end of life the whole luminaire shall be replaced. There are no serviceable parts, do not attempt to dismantle or open the product.
- To avoid injury or damage to the luminaire, ensure that power leads and screws are secure before connecting the power.
- Ensure the recessed luminaire does not come in contact with corrosive chemicals/solvents or abrasive cleaners etc.
- To clean, wipe with a soft damp clean cloth. Do NOT soak or immerse the product in water or other liquids.

Specifications			
SKU #	300615	300616	300617
Shape	Round Pill	Round Flare	Square Fold
Rated Voltage	220-240V~ 50Hz		
Rated Wattage	1.5W		
LED Specs	Colour Switching LEDs*, CRI≥90		
Rated Lumens	30 lumens	50 lumens	60 lumens
Weight	0.4kg		
Cut-out Size	Ø 50mm		
IP Rating	IP20		
Recessed Luminaire Classification	Do-Not-Cover		
Control Gear Classification	Do-Not-Cover		
Dimensions	Dia:60mm D:36mm	Dia:60mm D:36mm	W:60mm H:60mm D:51mm
LED Driver Model #	LiFud LF-GIR003YSII0350H		

* The luminaire MUST be turned OFF, before switching the colour temperature.