

TREAD LED STEP LIGHT

SKU# 300854, 300855

Rated Voltage 220-240V~ 50Hz

To ensure correct function and safety, please read and follow all instructions carefully before using the product. Please keep instructions for future reference.

Warranty

- This luminaire is covered by a 3-year warranty. The warranty is from date of purchase, not the date of installation.
- If the luminaire is not assembled and installed by a licensed electrician, the warranty will be void.
- Please retain the proof of purchase and evidence of installation by a licensed electrician for any warranty enquiries.
- Warranty will be void if there is any damage due to improper usage or modification to the luminaire.
- This luminaire is not suitable for use with dimmer switches. Warranty will be void if the luminaire is used on the same circuit, which has a dimmer switch.
- Failure to comply with the instructions in this manual may increase the risk of damage or injury and will void the warranty.

Installation requirements

- This luminaire must be assembled and installed by a licensed electrician.
- All wiring and installation of the luminaire must adhere to the latest local and national wiring rules.
E.g. AS/NZS 3000 Electrical Installations Do not exceed the maximum wattage rating.
- This luminaire is a Class II product and must be maintained during wiring and installation.
- Select a suitable location for installation:
 - The mounting point must support 2 times the weight of the luminaire.
 - This luminaire is suitable for recessed wall mount only. Not suitable for ceiling or in-ground installations.
 - If installing a luminaire in an area prone to moisture, ensure that the area is well ventilated, and an appropriately rated exhaust fan is used if required. Damage or corrosion caused by moisture is not a product fault, and as such is not covered under warranty.
- If the diffuser is damaged or cracked. For your safety, discontinue use and replace the luminaire, the diffuser is non-replaceable.
- The colour temperature selection **MUST** be made during the installation, as the switch can only be accessed by a licensed electrician.
- This luminaire is not suitable for use with dimmer switches and should not be used with a circuit which has a dimmer.
- This recessed luminaire has an insulating ceiling type IC-4 rating. Building insulation material can safely be exposed continuously to temperatures up to 90°C may abut and cover the luminaire. (Please refer to the IC-4 rating section in this instruction manual for further details.)
- Take care not to pull any electrical wires during unpacking as this may damage the connection.
- Lay out all the components on a smooth surface and make sure there are no components missing before assembling. If parts are missing, return the complete product to the place of purchase for inspection or replacement.
- Check whether the luminaire has been damaged during transport. Do not operate/install any product which appears damaged in any way. Return the complete product to the place of purchase for inspection, repair or replacement.
- Ensure power to the circuit you are working on has been switched OFF, before commencing any electrical work.

Installation directions

1. Remove all packaging material from the product and be careful not to throw away accessories that may be hidden within the packaging material.
2. Ensure power to the circuit you are working on has been switched OFF before commencing any electrical work. (Fig.1)
3. Install the luminaire into the installation hole.
4. Cut an installation hole of Ø82mm into the wall. (Fig. 2)
5. Select the colour temperature via the switch on the back of the downlight. (Fig. 3)

NOTE: The recessed luminaire must be turned off before using the switch to change the colour temperature.

6. Connect the mains supply wire to the light luminaire using the terminal block provided. Ensure that the wires are secure, and no bare wires are exposed. (Fig.3)

Mains Supply Wire

Neutral – Blue or Black

Live – Brown or Red

Fitting Wire

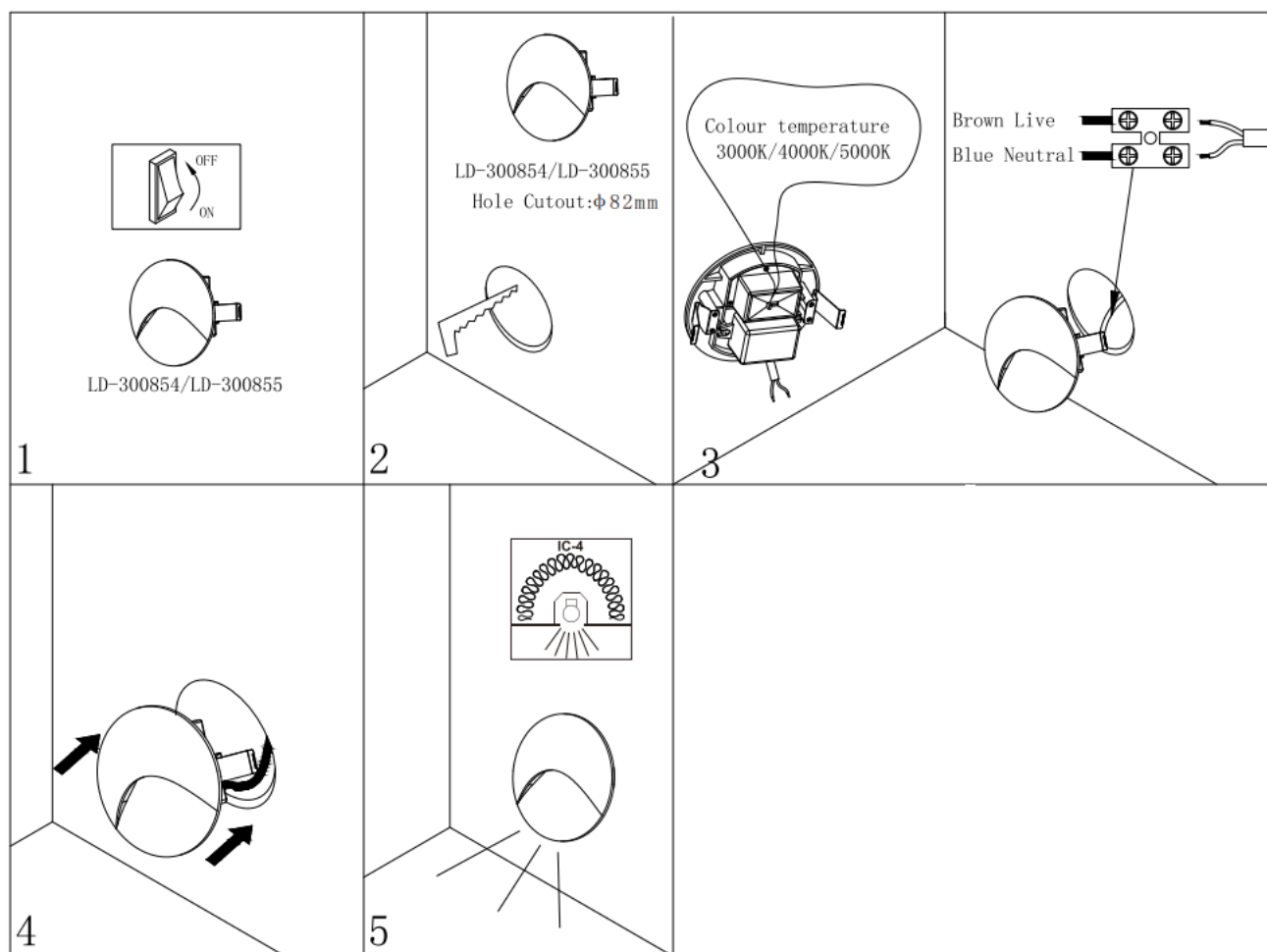
N -Blue

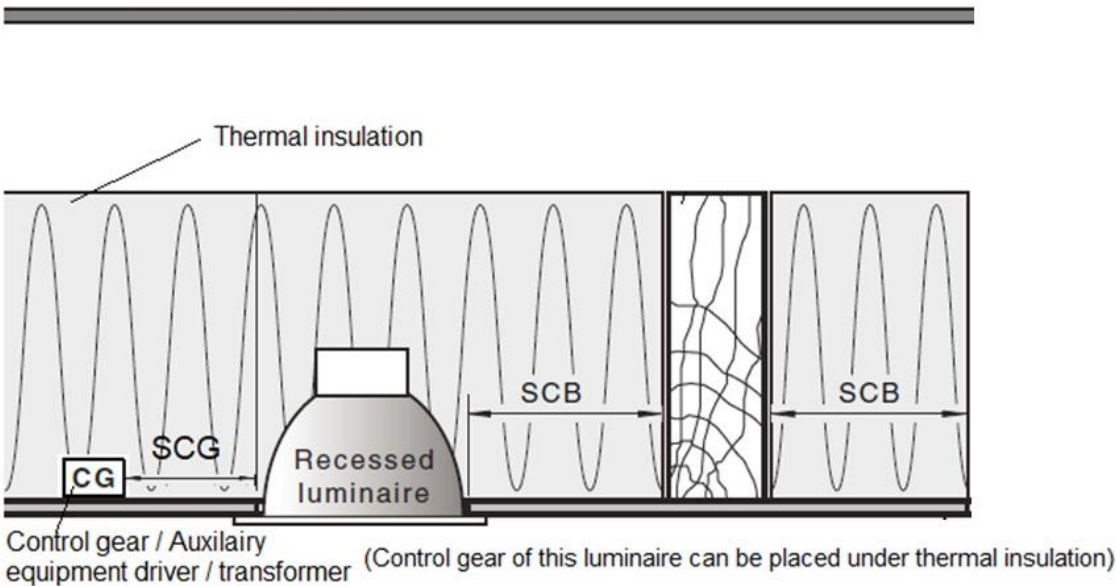
L – Brown

NOTE: This luminaire is a Class II product and must maintained during the wiring and installation.

7. Push the springs up and put the recessed luminaire up through the cut-out hole and into the wall. (Fig. 4)
8. Install the luminaire into the installation hole. After the installation is complete, turn the power to the circuit ON and test all the lighting functions of the luminaire. (Fig. 5)

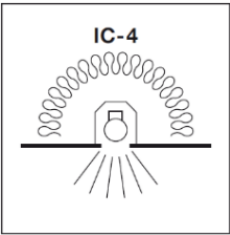
NOTE: This luminaire is rated IC-4 building insulation and building elements may cover or abut to the top and sides of the luminaire. Please refer to the IC-4 section in this instruction manual for further details.





LOCATION	DISTANCE	DESCRIPTION
SCB	0mm	Minimum distance between the side of the recessed luminaire and any building element as specified in AS/NZS 3000.

IC-4 Rating – AS/NZS 60598.2.2: 2016



A recessed luminaire that can be abutted against normally flammable building materials, including building insulation, and can be covered in normal use. Building elements, building insulation or debris have restricted access to the heated parts of the luminaire. This classification of recessed luminaire is effectively a sealed unit that has a restricted flow of air between the habitable room the luminaire emits light into and the void/space where the main body of the luminaire is located.

- A closed luminaire that allows building insulation to come into contact with its sides and to cover it.
- Type IC-4 recessed luminaire can be used together with building insulation that can safely be exposed continuously to temperatures up to 90°C may abut and cover the luminaire.
- The declared IC-4 rating is based on the default testing ambient temperatures 25°C according to the standard.

Building insulation and building elements may cover or abut to the top and sides of the luminaire.

Safety tips

- Always ensure the power is OFF and the luminaire has cooled down before performing any maintenance, cleaning or making any adjustment to the luminaire.
- To avoid injury or damage to the luminaire, ensure that power leads and screws are secure before connecting the power.
- To clean, wipe with a soft damp cloth. Do NOT soak or immerse the luminaire in water or other liquids.
- Ensure that the luminaire does not come in contact with corrosive chemicals/solvents or abrasive cleaners etc.
- The light source of this luminaire shall be replaceable by the manufacturer or his service agent or similar qualified person. There are no serviceable parts, do not attempt to dismantle or open the luminaire.
- If the diffuser is damaged or cracked. For your safety, discontinue use and replace the luminaire, the diffuser is non-replaceable.
- Ensure the luminaire does not come in contact with corrosive chemicals/solvents or abrasive cleaners etc.
- To clean, wipe with a soft damp clean cloth. Do NOT soak or immerse the product in water or other liquids.

Specifications

SKU #	300854	300855
Colour	White	Black
Rated Voltage	220-240V~ 50Hz	
Rated Wattage	6W	
LED Specs	Non-dimmable, Colour Switching, CRI > 90	
Rated Lumens	3000K – 100 lumens 4000K – 150 lumens 5000K – 150 lumens	
Weight	0.2kg	
Cut Out Size	Ø82mm	
Recessed Luminaire Classification	IC-4	
Dimensions	H:50mm D:90mm	