

FORO STEPLIGHT WITH PIR SENSOR

SKU# 300869

Rated Voltage 100-240V~ 50-60Hz

Thank you for purchasing this quality Lucci product. To ensure correct function and safety, please read and follow all instructions carefully before assembly, installation and use of this luminaire. Please keep instructions for future reference.

Warranty

- This luminaire is covered by a 3 year warranty. The warranty is from date of purchase, not the date of installation.
- If the luminaire is not assembled and installed by a licensed electrician the warranty will be void.
- Please retain proof of purchase and evidence of installation by a licensed electrician for any warranty enquiries.
- Warranty will be void if there is any damage due to improper usage or modification to the luminaire.
- Failure to comply with the instructions in this manual may increase the risk of damage or injury and will void warranty.
- This luminaire is not suitable for use with dimmer switches. Warranty will be void if the luminaire is used on the same circuit which has a dimmer switch.

Installation Requirements

- Must be installed by a licensed electrician.
- All wiring and installation of the luminaire must adhere to the latest local and national wiring rules.
eg. AS/NZS 3000 Electrical Installations.
- This is a Class II luminaire and must be maintained during wiring and installation.
- Select a suitable location for installation:
 - This luminaire is suitable for indoor use only.
 - The mounting point must support 2 times the weight of the luminaire.
 - Ensure the luminaire is not installed in direct line of an air vent/system.
 - If installing a luminaire in an area prone to moisture, ensure that the area is well ventilated and an appropriately rated exhaust fan is used if required. Damage or corrosion caused by moisture is not a product fault, and as such is not covered under warranty.
 - This recessed luminaire has an insulating ceiling type IC-4 rating. Building insulation material can safely be exposed continuously to temperatures up to 90°C may abut and cover the luminaire. (Please refer to the Clearance Information section and the IC-4 Rating section in this instruction manual for further details)
 - If loose fill insulation or thermal insulation is not fixed into position or if there are loose combustible materials (e.g. leaves or combustible materials stored in the roof space), a barrier or guard is required as per the Clearance Information section in this instruction manual.
 - Take note of the clearance values. Do not remove any structural members for the installation of this luminaire.
- This luminaire is not suitable for dimming and should not be used with a circuit which has a dimmer. Warranty will be void if the luminaire is used on the same circuit which has a dimmer switch.
- Take care not to pull any electrical wires during unpacking as this may damage the connection.
- Lay out all the components on a smooth surface and make sure there are no components missing before assembling. If parts are missing, return the complete product to the place of purchase for inspection or replacement.
- Check whether the luminaire has been damaged during transport. Do not operate/install any product which appears damaged in any way. Return the complete product to the place of purchase for inspection, repair or replacement.
- Ensure power to the circuit you are working on has been switched OFF before commencing any electrical work.

Installation Directions

1. Remove all packaging material from the product.
2. Select a suitable place for installation and check on the wall type requirements for mounting depth, wall thickness and cut out size. Take note of the mounting surface.

NOTE: To ensure the PIR sensor operates properly, it is recommended to install the luminaire to keep the PIR sensor at the minimum 0.5M height.

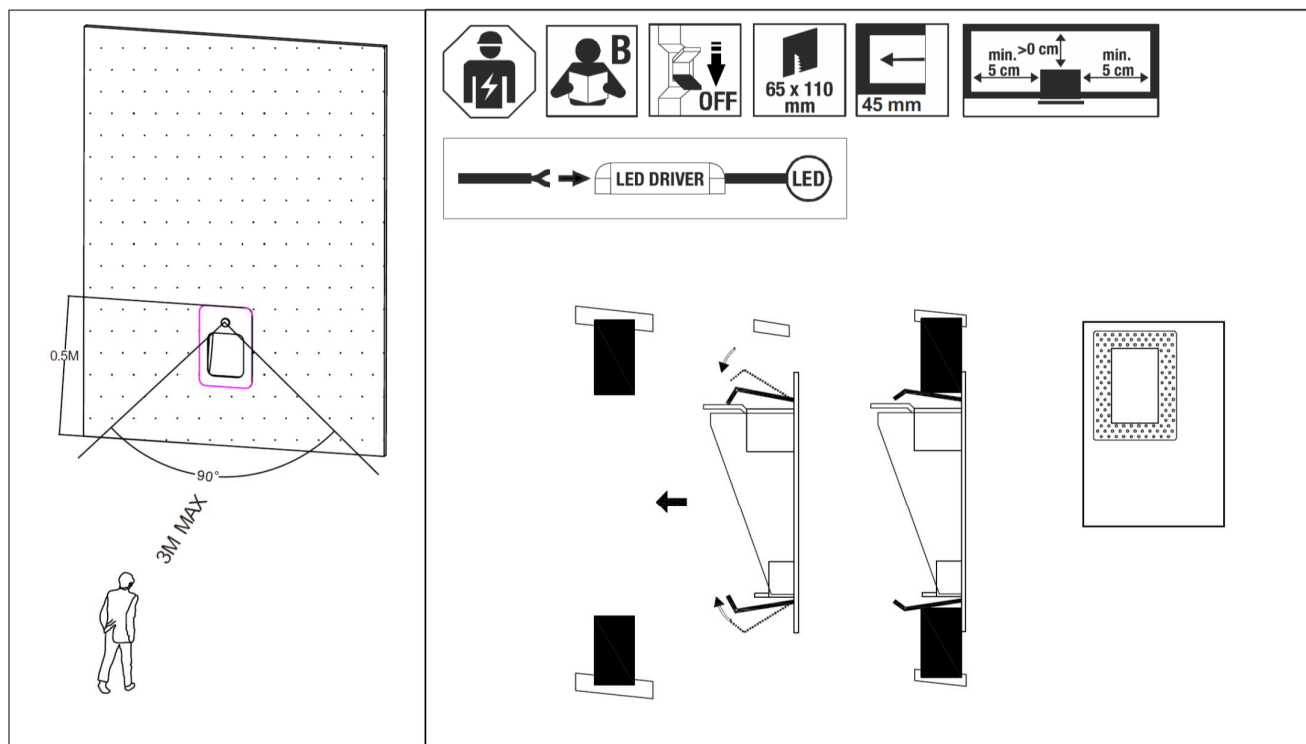
3. Cut out a rectangle installation hole of 65mm x 110mm.

NOTE: The depth of this luminaire is 45mm. Please ensure the cavity for installation has the enough depth.

4. Connect the mains supply wire to the LED driver input terminals.

Mains Supply Wire	LED Driver Input Terminals
Neutral – Blue or Black	N
Live – Brown or Red	L

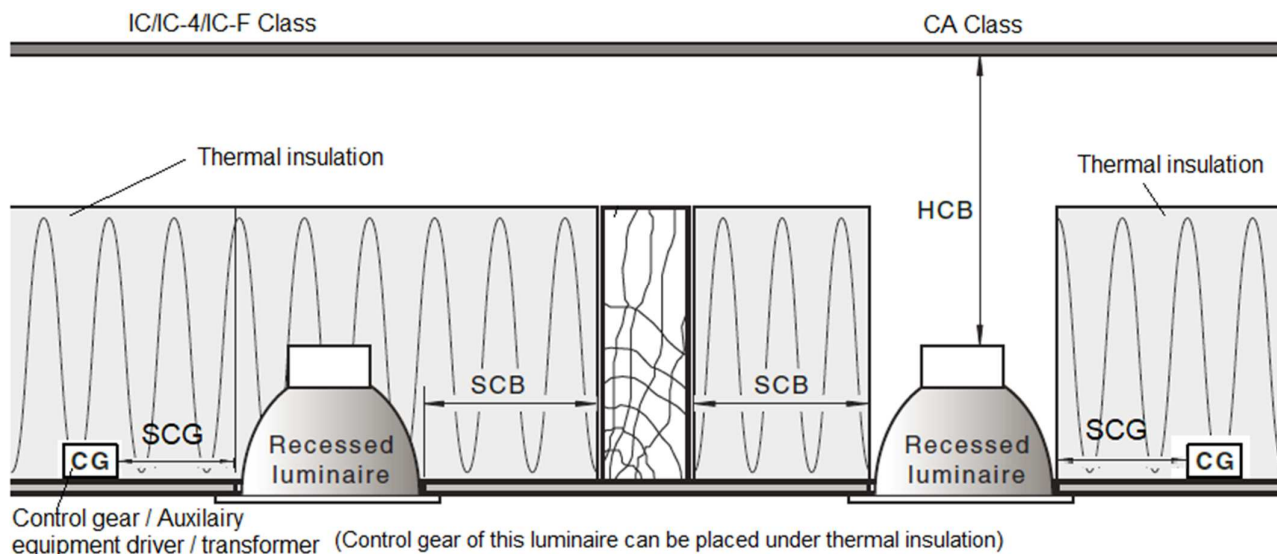
5. Ensure the wires are secure and no bare wires are exposed.
6. Push the clips in and insert the luminaire into the cut out hole.
7. Ensure all the clearance values are maintained during and after installation of the luminaire.
Please refer to the Clearance Information section and the IC Rating section in this instructions for further details.
8. After the installation, switch on the luminaire to test all the lighting functions and enjoy your new luminaire.



NOTE: The luminaire has a PIR (Passive Infra Red) sensing device which continuously scans the operating zone and immediately switches the light on when it detects movement in that area. Whenever movement is detected within the range of the sensor, the light will switch on automatically to illuminate the area. While there is movement within the sensor range, the light will remain on.

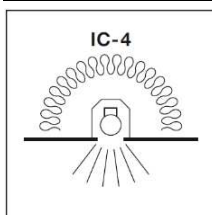
The detection area is approximately maximum 3 metres away at an angle of 90° wide. This may vary depending on the mounting height and location.

Clearance Information



LOCATION	DISTANCE	DESCRIPTION
HCB	0 mm (Minimum)	Clearance between the top of the recessed luminaire and any combustible materials, building elements or objects above it.
SCB	50 mm (Minimum)	Clearance between the side of the recessed luminaire and any combustible materials, building elements or objects.
SCI	0 mm (Abutted)	Insulation can be abutted against the side of recessed luminaire and covered as per IC Rating. See IC Rating section for more details.
SCG	N/A	Auxiliary equipment/driver/transformer must be placed 100mm away from the luminaire. It can be placed under the thermal insulation and covered.

IC Rating – AS/NZS 60598.2.2 : 2016



1. A closed luminaire that allows building insulation to come into contact with its sides and to cover it.
2. Type IC-4 recessed luminaire can be used together with building insulation that can safely be exposed continuously to temperatures up to 90°C may abut and cover the luminaire.

RISK OF FIRE – Required clearance from structural members and building elements
SCB = 50 mm

Safety Tips

- Always ensure the power is OFF and the luminaire has cooled down before performing any maintenance, cleaning or making any adjustment to the luminaire.
- To avoid injury or damage to the luminaire, ensure that power leads and screws are secure before connecting the power.
- Select a suitable location away from liquids and hazards.
- To clean, wipe with a soft damp cloth. Do NOT soak or immerse the luminaire in water or other liquids.
- Ensure that the luminaire does not come in contact with corrosive chemicals/solvents or abrasive cleaners etc.
- Select a suitable location away from liquids and hazards.
- The light source in this luminaire is not replaceable; when the luminaire reaches its end of life the whole luminaire shall be replaced.

Specifications

SKU #	300869
Colour	White
Rated Voltage	100-240V~ 50-60Hz
Rated Wattage	4W
LED details	3000K, 210 lumens, Non-dimmable
Cut Out Size	65mm x 110mm (rectangle)
Recessed Luminaire Classification	IC-4
Weight	0.2kg
Dimensions	H:120mm W:80mm D:45mm