

GALA DAY NIGHT SLEEP LINEAR LED STEP LIGHT

SKU# 300887, 300888

Rated Voltage 220-240V~ 50Hz

To ensure correct function and safety, please read and follow all instructions carefully before assembly, installation, and use of this luminaire. Please keep instructions for future reference.

Warranty

- This recessed luminaire is covered by a 3-year warranty valid for in-store replacement or refund only.
- The warranty period starts from the date of purchase, not the date of installation. Please retain the proof of purchase.
- The luminaire is non-dimmable. The use of dimmers may damage your recessed luminaire and will void your warranty.
- Warranty will be void if there is any damage due to improper usage or modification to the recessed luminaire.
- Failure to comply with the instructions in this manual may increase the risk of damage or injury and will void the warranty.

Installation Requirements

- This luminaire must be assembled and installed by a licensed electrician.
- All wiring and installation of the recessed luminaire must adhere to the latest local and national wiring rules. eg. AS/NZS 3000 Electrical installations.
- This is a Class II luminaire and must be maintained during wiring and installation.
- Select a suitable location for installation;
 - The mounting point must support 2 times the weight of the recessed luminaire.
 - This recessed luminaire is suitable for indoor use only
 - Ensure the luminaire is not installed in direct line of an air vent/system.
 - If installing a luminaire in an area prone to moisture, ensure that the area is well ventilated, and an appropriately rated exhaust fan is used if required. Damage or corrosion caused by moisture is not a product fault, and as such is not covered under warranty.
 - This recessed luminaire has an insulating ceiling type IC-4 rating. Building insulation material can safely be exposed continuously to temperatures up to 90°C may abut and cover the luminaire. (Please refer to the Clearance Information section and the IC-4 rating section in this instruction manual for further details.)
 - If loose-fill insulation or thermal insulation is not fixed into position or if there are loose combustible materials (e.g. leaves or combustible materials stored in the roof space), a barrier or guard is required as per the Clearance Information section in this instruction manual.
- This luminaire is not suitable for dimming and should not be used with a circuit which has a dimmer. Warranty will be void if the luminaire is used on the same circuit which has a dimmer switch.
- Take care not to pull any electrical wires during unpacking as this may damage the connection.
- Lay out all the components on a smooth surface and make sure no components are missing before assembling. If parts are missing, return the complete product to the place of purchase for inspection or replacement.
- Check whether the recessed luminaire has been damaged during transport. Do not operate/install any product which appears damaged in any way. Return the complete product to the place of purchase for inspection, repair or replacement.
- Ensure power to the circuit you are working on has been switched OFF before commencing any electrical work.

Installation Directions

1. Remove all packaging material from the product and be careful not to throw away accessories that may be hidden within the packaging material.
2. Ensure the power is OFF before install the luminaire. (Fig. 1).
3. Cut an installation hole of Ø80mm into the wall. (Fig. 2).
4. Connect the mains supply wire to a Class II terminal block/box (not included). (Fig. 3)

Mains Supply Wire

Neutral – Blue or Black

Live – Brown or Red

Luminaire Wire / Wire Label

N or Blue (Neutral)

L or Brown (Live)

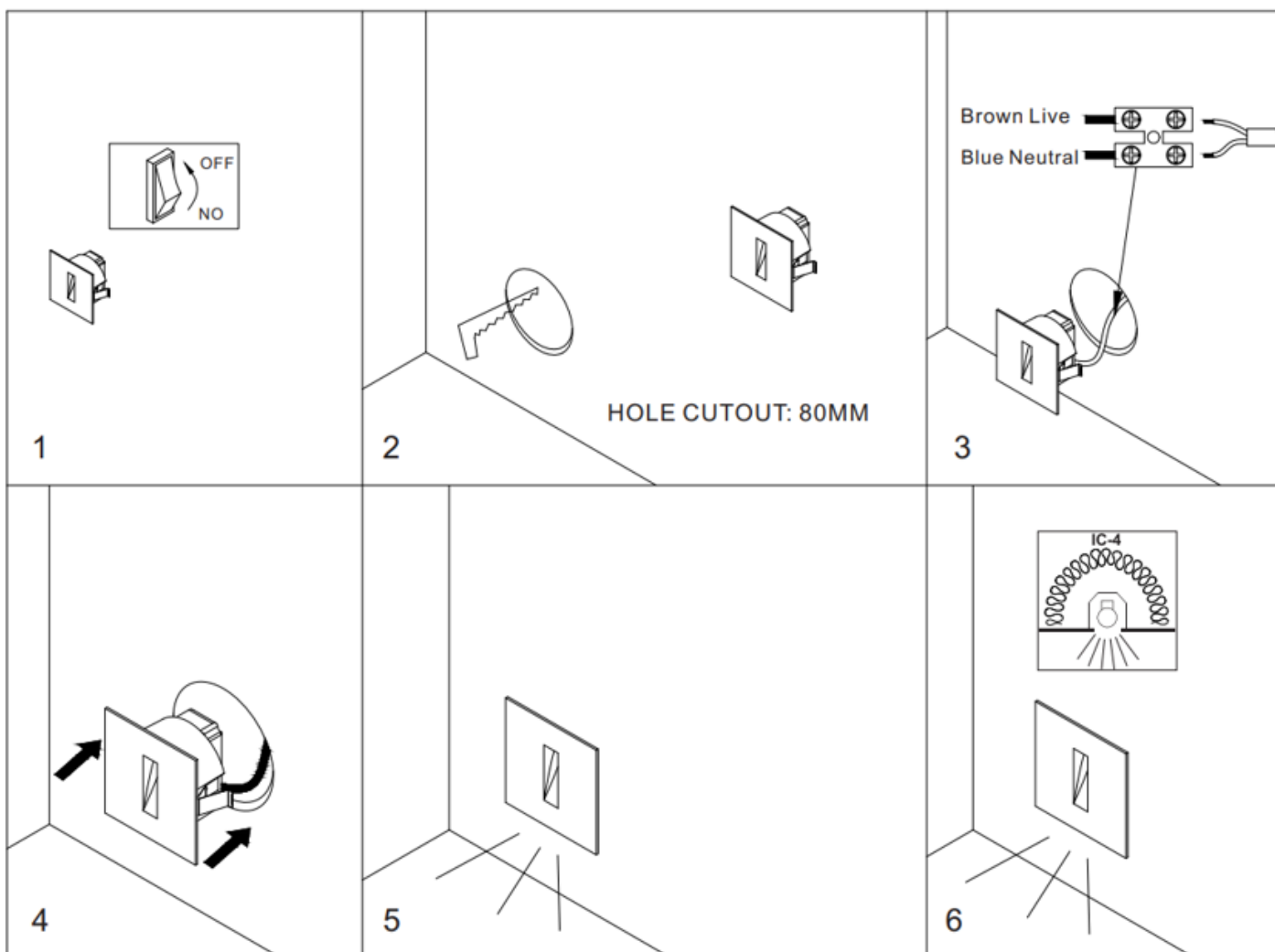
5. Ensure that the wires are secure and no bare wires are exposed. (Fig. 3)

NOTE: This is a Class II luminaire and must be maintained during wiring and installation.

6. Push the springs back and install the recessed luminaire through the cut-out hole (Fig. 4).
7. Ensure all the clearance values are maintained during and after installation of the luminaire, thermal insulation, loose fill insulation, loose combustible materials and any structural members.

NOTE: Please refer to the Clearance Information section and the IC-4 section in this instruction manual for further details.

8. After the installation, switch on the luminaire to test all the lighting functions and enjoy your new luminaire.



LIVE WELL DAY NIGHT SLEEP SETTINGS:

This luminaire incorporates 3 light level and colour temperature scenes known as Day, Night & Sleep.

These scenes have been specifically designed to harmonize with your day, improve energy levels and assist your body in preparing for sleep. Control is via a mechanical or relay ON/OFF switch only. This lamp is not compatible with rotary or touch button dimmer switches.

Switching cycle:

Switching the luminaire off / on within 1-3 seconds will cycle the lamp through the below pattern.

FIRST SWITCH 2700K 20LM – (Sleep) recommended setting for at least 2 hours before bed.

SECOND SWITCH 2700K 100LM – (Night) recommended setting 6 hours before bed.

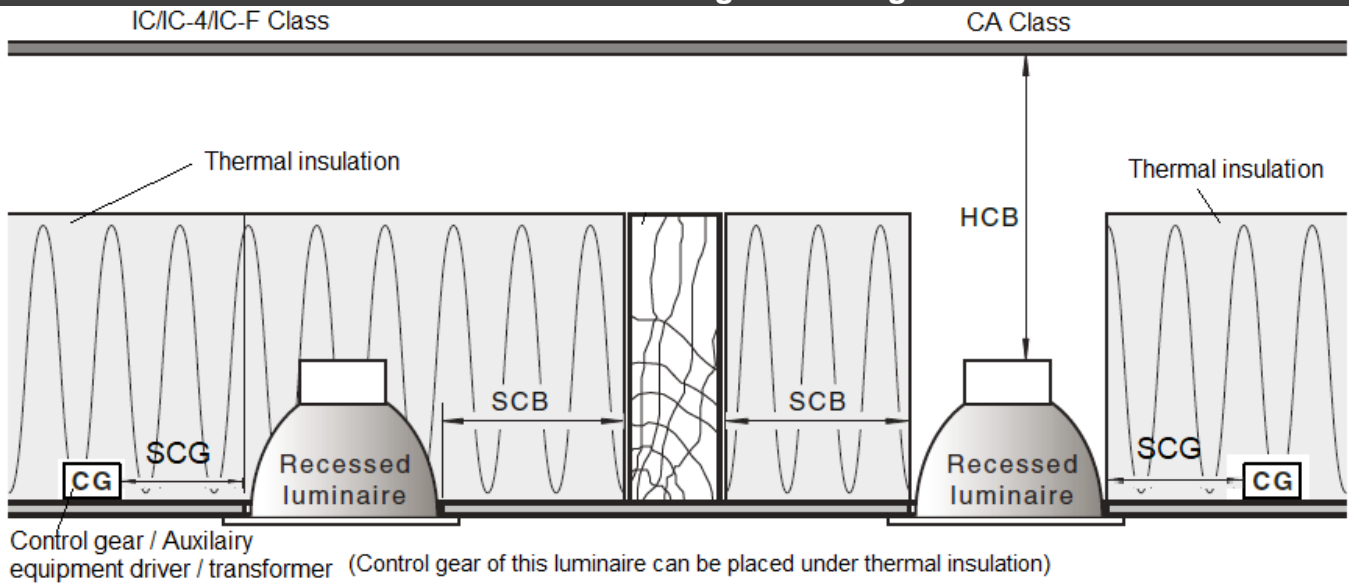
THIRD SWITCH 4000K 200LM – (Day) recommended setting at your wake and throughout the bulk of your day.

The luminaire contains a memory feature that activates after remaining on for more than 7 seconds. This will ensure the luminaire returns to your last active setting. Your new luminaire has been pre-set to the FIRST SWITCH (Sleep) function. Simply toggle through to reach your desired lighting.

Resetting to Default:

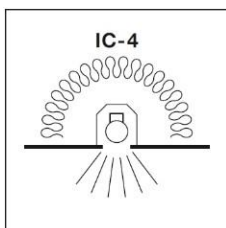
If you have multiple Day Night Sleep LED step lights installed on the one circuit that have become out-of-sync, these can be returned to the default FIRST SWITCH (Sleep) setting by switching off / on twice immediately (within 1 second).

Clearance Information – AS/NZS 3000:2018 Wiring Rules - Figure 4.9



LOCATION	DISTANCE	DESCRIPTION
HCB	50 mm (Minimum)	Clearance between the top of the recessed luminaire and any combustible materials, building elements or objects above it.
SCB	50 mm (Minimum)	Clearance between the side of the recessed luminaire and any combustible materials, building elements or objects.
SCI	0 mm (Abutted)	Insulation can be abutted against the side of the recessed luminaire and covered as per IC-4 rating. See the IC-4 rating section for more details.
SCG	N/A	Auxiliary equipment/driver/transformer must be placed 100mm away from the luminaire. It can be placed under the thermal insulation and covered.

IC Rating – AS/NZS 60598.2.2: 2016



1. A closed luminaire that allows building insulation to come into contact with its sides and to cover it.
2. Type IC-4 recessed luminaire can be used together with building insulation that can safely be exposed continuously to temperatures up to 90°C may abut and cover the luminaire;
3. The declared IC-4 rating is based on the default testing ambient temperatures 25°C according to the standard.

RISK OF FIRE – WARNING — RISK OF OVERHEATING OR FIRE IF THE CLEARANCE DISTANCES ARE COMPROMISED.

Safety Tips

- Always ensure the power is OFF and the luminaire has cooled down before performing any maintenance, cleaning or making any adjustment to the recessed luminaire.
- The external flexible cable or cord of this luminaire cannot be replaced; if the cable or cord is damaged, the luminaire shall be destroyed.
- The luminaire must not be used if the protective shield has been cracked. Replace any cracked protective shield before using the luminaire.
- The light source of this luminaire is not replaceable; when the light source reaches its end of life the whole luminaire shall be replaced. There are no serviceable parts, do not attempt to dismantle or open the product.
- To avoid injury or damage to the luminaire, ensure that power leads and screws are secure before connecting the power.
- Select a suitable location away from liquids and hazards.
- Ensure that the fitting does not come in contact with corrosive chemicals/solvents or abrasive cleaners etc.
- To clean, wipe with a soft damp clean cloth. Do NOT soak or immerse the product in water or other liquids.

Specifications

SKU #	300887	300888
Colour	Black	White
Rated Voltage	220-240V~ 50Hz,	
Rated Wattage	5W	
LED Specs	NON-Dimmable, Colour Shifting (2700K-4000K), CRI > 90	
Rated Lumens	Sleep 2700K - 20 lumens Night 2700K - 100 lumens Day 4000K - 200 lumens	
LED Driver	CA-005-040D2-120	
Weight	0.19kg	
Cut-out Size	Ø 80mm	
Recessed Luminaire Classification	IC-4	
Dimensions	H:90mm W:90mm D:58mm	