

TIRO 1 LIGHT DIY PULL CORD WALL SCONE

SKU# 309230, 309231, 309232

Rated Voltage 220-240V~ 50Hz

To ensure correct function and safety, please read and follow all instructions carefully before assembly, installation and use of this product. Please keep instructions for future reference.

Warranty

- This luminaire is covered by a 12-month warranty. The warranty is from date of purchase, not the date of installation.
- Please retain the proof of purchase and evidence of installation by a licensed electrician for any warranty enquiries.
- Warranty will be void if there is any damage due to improper usage or modification to the luminaire.
- Failure to comply with the instructions in this manual may increase the risk of damage or injury and will void the warranty.

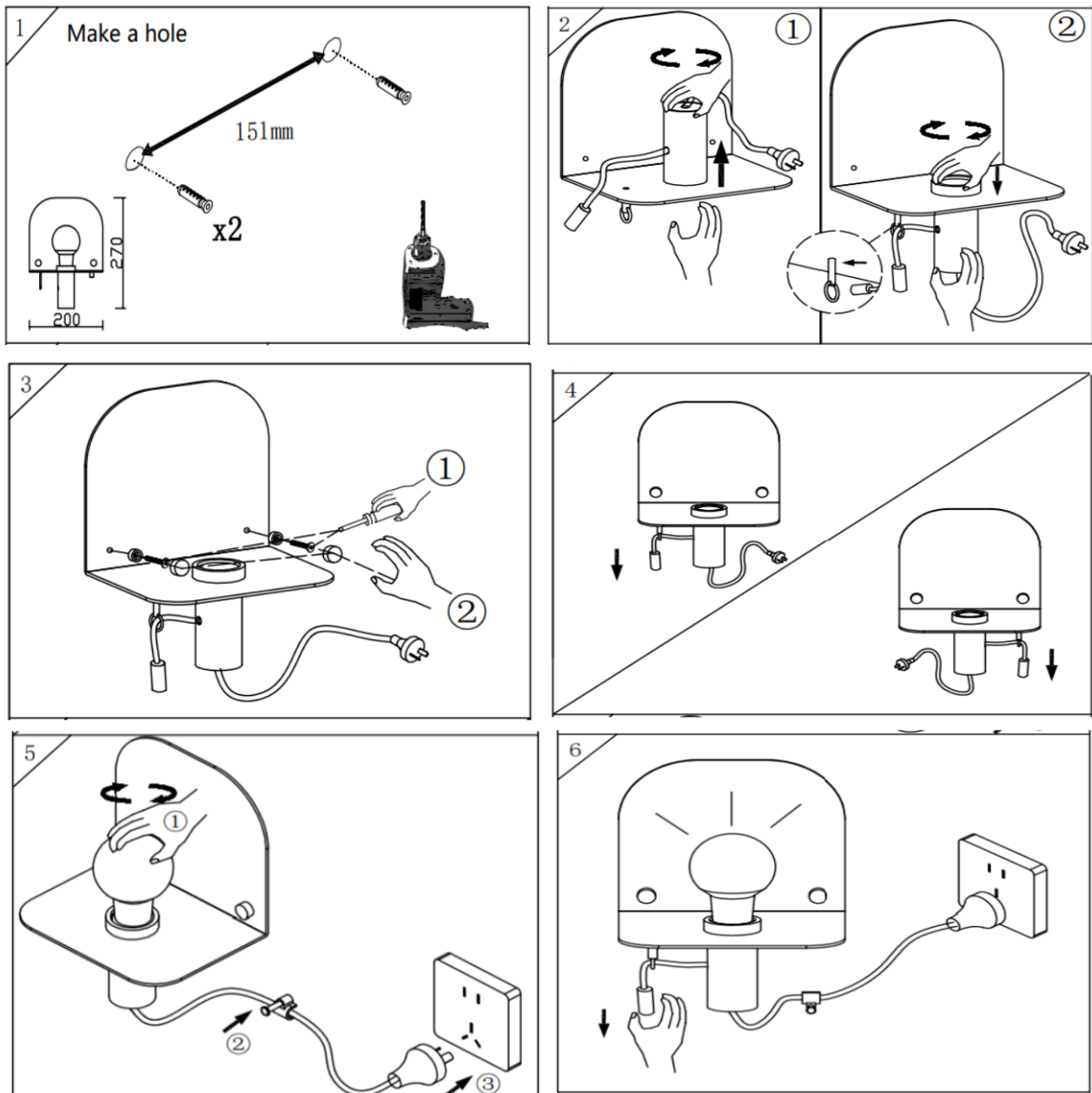
Installation Requirements

- This luminaire must be assembled and installed by a licensed electrician.
- Before the installation, check the installation location in the wall has access to a socket outlet which is connected to a wall light switch and dimmer. If it does not, please contact a licensed electrician to arrange installation of the socket outlet, wall light switch and dimmer before continuing.
- All wiring and installation of the luminaire must adhere to latest local and national wiring rules. e.g. AS/NZS 3000 Electrical installations. If unsure, please contact a licensed electrician.
- Do not exceed the maximum wattage rating.
- Select a suitable location for installation.
- This luminaire is suitable for indoor use only.
- The mounting point must support 2 times the weight of the luminaire.
- Ensure the luminaire is not installed in direct line of an air vent/system.
- If installing a luminaire in an area prone to moisture, ensure that the area is well ventilated, and an appropriately rated exhaust fan is used if required. Damage or corrosion caused by moisture is not a product fault, and as such is not covered under warranty.
- Take care not to pull any electrical wires during unpacking as this may damage the connection.
- Lay out all the components on a smooth surface and make sure no components are missing before assembling. If parts are missing, return the complete product to the place of purchase for inspection or replacement.
- Check whether the luminaire has been damaged during transport. Do not operate/install any product which appears damaged in any way. Return the complete product to the place of purchase for inspection, repair or replacement.
- Do not plug into the mains power socket outlet before or during assembly. Only do so after the luminaire is fully assembled and is ready to use for the first time.

Installation Directions

1. Remove all packaging material from the product and be careful not to throw away accessories that may be hidden within the packaging material. If assembly is required, place the luminaire on a smooth non-scratch surface.
2. Remove the luminaire from the mounting bracket (Fig. 2-①), and reinstall the luminaire as shown in (Fig. 2-②). Ensure the pull cord is placed through the pull cord ring (Fig. 2-②).
3. Mark the screw hole positions on the wall. (Fig. 1)
Ensure the mounting surface can support 2 times the weight of the luminaire.
Ensure the luminaire is installed onto a solid surface.
Take care when drilling the screw hole positions, there are no electrical wiring or plumbing or other objects behind the wall. If unsure contact a suitable skilled person for installation.

4. Install the luminaire onto the wall using the threaded nuts and appropriate mounting screws and wall anchors. Ensure the screws and anchors used are suitable for the mounting surface and surrounding environment (Fig.3-①)
 5. Install the end caps over the mounting screws. (Fig. 3-②).
 6. NOTE: The pull cord can hang to the left or to the right side of the mounting bracket (Fig. 4). It's position can be changed by unscrewing the pull cord ring and the decorative nut from their current positions underneath the mounting bracket, and then re-screwing them onto the opposite sides. The luminaire can then be rotated on the mounting bracket to position the pull cord towards and through the repositioned pull cord ring.
 7. Install a globe (not included) into the lamp holder (Fig. 5-①) **NOTE: Do not exceed the maximum wattage rating**
 8. Fix the flexible wiring into the wall using the cable clip provided and secure with the included nail (Fig. 5-②).
- WARNING: THE FLEXIBLE WIRING CONNECTED TO THIS LUMINAIRE SHALL BE EFFECTIVELY FIXED TO THE WALL.**
9. Insert the plug into the mains power outlet, ensuring it is fully plugged in before turning on the power. (Fig. 5-③).
 10. Use the pull chain switch to turn the luminaire on/off (Fig. 6).
 11. After the installation, switch on the luminaire to test all the lighting functions before electrician leaves and enjoy your new lighting product.



Safety Tips

- Always ensure the power is OFF and the luminaire has cooled down before performing any maintenance, cleaning, changing the globe or making any adjustment to the luminaire.
- The external flexible cable or cord of this luminaire cannot be replaced; if the cable or cord is damaged, the luminaire shall be destroyed.
- To avoid injury or damage to the luminaire, ensure that power leads and screws are secure before connecting the power.
- To clean, wipe with a soft damp cloth. Do NOT soak or immerse the luminaire in water or other liquids.
- Ensure that the luminaire does not come in contact with corrosive chemicals/solvents or abrasive cleaners etc.

Specifications

SKU #	309230	309231	309232
Colour	Textured Black	Textured White	Aged Brass Finish
Rated Voltage	220-240V~ 50Hz		
Rated Wattage	45W Max.		
Lamp Holder	ES / E27		
Weight	1.7kg		
Luminaire Dimensions	H:270mm W:200mm E:150mm		