

Installation Instructions
SKU# 060435 (LD-53026-10+5+5)
Rated Voltage 220-240V~ 50Hz

THANK YOU FOR PURCHASING THIS QUALITY LUCCI PRODUCT, TO ENSURE CORRECT FUNCTION AND SAFETY, PLEASE READ AND SAVE ALL INSTRUCTIONS CAREFULLY BEFORE USING THE PRODUCT.

WARRANTY:

- This light fitting is covered by a 12 month warranty; please retain proof of purchase and evidence of installation by a licensed electrician.
- Warranty will be void if there is any damage due to improper usage or modification to the fitting.

INSTALLATION REQUIREMENTS:

- **Must be installed by a Licensed Electrician.**
- **All wiring must adhere to local and national wiring codes. eg. AS/NZS 3000 latest edition.**
- **Do not exceed the maximum wattage rating.**
- **This product is suitable for indoor use only.**
- **The mounting point must be able to support 2 times the weight of the fitting.**
- **Check the installation circuit is appropriately rated for the fitting.**
- **Take care not to pull any electrical wires during unpacking as this may damage the connection.**
- **Lay out all the components on a smooth surface and make sure there is no component's missing before assembling.**
- **Check whether the fitting has been damaged during transport. Do not operate/install any product which appears damaged in any way. Return the complete product to the place of purchase for inspection, repair or replacement.**
- **Ensure all power to the circuit you are working on has been switched OFF.**
- **Select a suitable location for installation. Ensure the fitting is not installed next to any air vents and is not in any moist or damp areas.**

INSTALLATION DIRECTIONS:

1. Remove the mounting bracket from the canopy.
2. Use the mounting bracket as a template to mark the screw positions onto the ceiling.
3. Depending on the mounting surface, determine if the plastic anchors are required for the installation of the mounting bracket. If required push the plastic anchors into the holes.
Install the mounting bracket onto the ceiling by using appropriately sized mounting screws.
Ensure the screws used are suitable for the mounting surface and the mounting surface is able to support 2 times the weight of the complete fitting.
4. Remove the cover from the terminal block and connect the mains supply wire.
Ensure that the wires are secure and no bare wires are exposed.

Mains Supply Wire

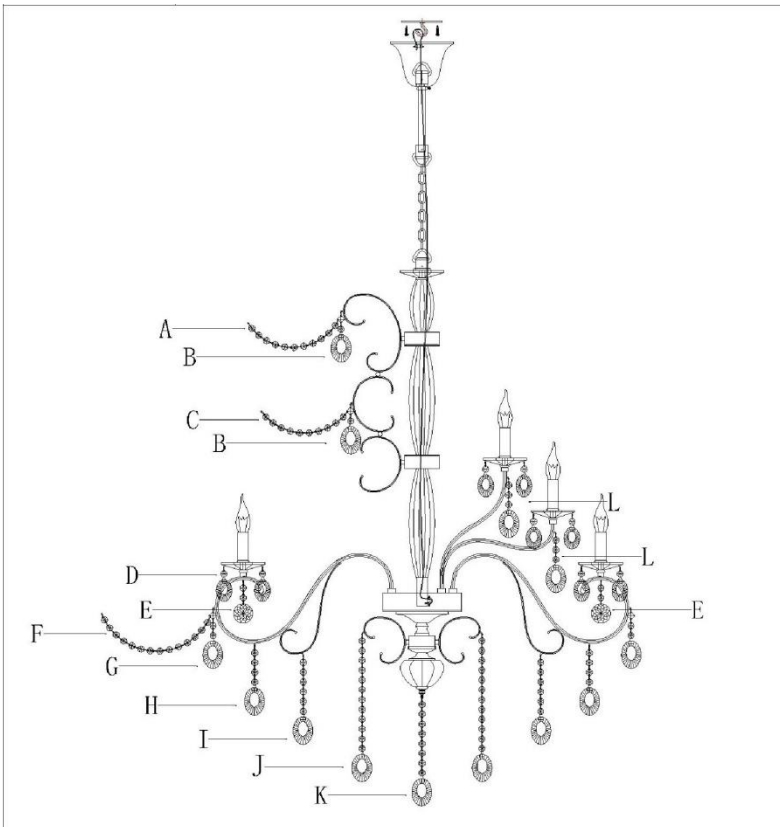
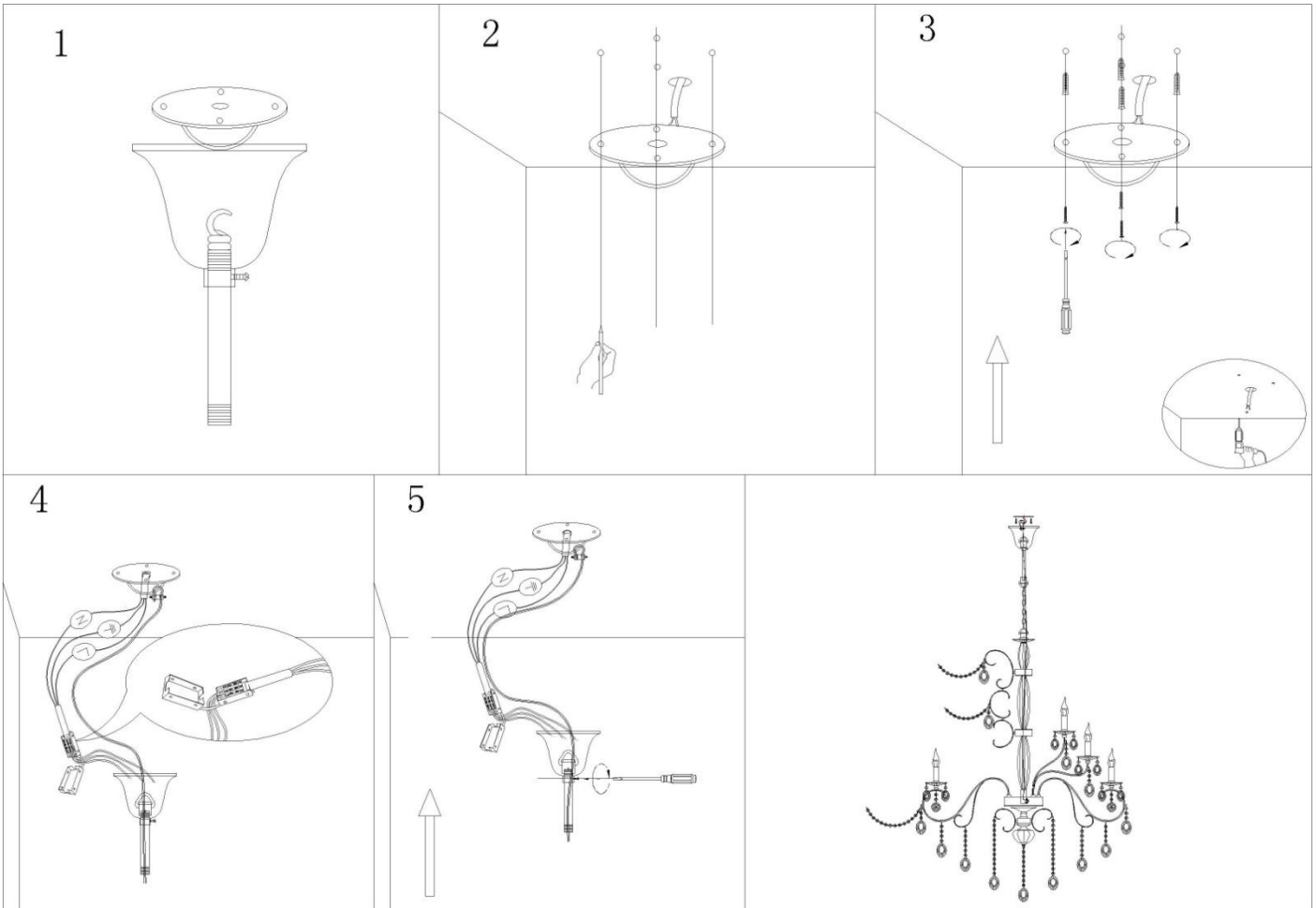
Earth – Yellow/Green
Neutral – Blue or Black
Live – Brown or Red

Fitting Wire

Yellow/Green ⊕
Blue
Brown

Secure the safety wire onto the mounting bracket and adjust the length to ensure it is shorter than the mains and fitting wire in case there is any failure in the fitting.

5. Place the terminal block cover firmly back over the terminal block and adjust the canopy to cover the mounting bracket. Lock into place by tightening the screw on the rod.
6. Hang the crystals onto the fitting according to the diagram on the following page.
7. Place the lamp holder covers onto the lamp holders.
8. Install globes (not included) into the lamp holder. Do not exceed the maximum wattage rating.



ON		sets
A	-----	5
B	○-----	10
C	-----	5
D	○-----	80
E	○-----	10
F	-----	10
G	○-----	10
H	○-----	10
I	○-----	10
J	○-----	5
K	○-----	1
L	○-----	10

SAFETY TIPS:

1. Always ensure the power is OFF and the fitting has cooled down before performing any maintenance or adjustment to the fitting.
2. Always ensure the power is OFF and the fitting has cooled down before changing or cleaning the globe. Do not touch the globe with bare hands, use a clean cloth, gloves or a tissue.
3. To avoid injury or damage to the fitting, ensure that power leads and screws are secure before connecting the power.
4. Find a suitable location away from liquids and hazards.
5. Ensure that the fitting does not come in contact with corrosive chemicals, etc.
6. To clean, wipe with a damp clean cloth. Never soak the fitting with water.

SPECIFICATIONS:

SKU #	060435
MODEL #	LD-53026-10+5+5
RATED VOLTAGE	220-240V~ 50Hz
RATED WATTAGE	20 x MAX. 40W (800W)
LAMP HOLDER	SES
WEIGHT	21.90 kg
DIMENSIONS	980mm x 1400mm (D x H)