

DIM TO WARM TRANSITION LED DOWNLIGHT

SKU# 178200

Rated Voltage 220-240V~ 50Hz

Thank you for purchasing this quality Lucci product. To ensure correct function and safety, please read and follow all instructions carefully before assembly, installation and use. Please keep instructions for future reference.

Warranty

- This LED downlight is covered by a 5-year warranty valid for in-store replacement or refund only. The warranty is from the date of purchase, not the date of installation. Please retain the proof of purchase.
- The use of non-compatible dimmers may damage your LED downlight and will void your warranty.
- Warranty will be void if there is any damage due to improper usage or modification to the LED downlight.
- Failure to comply with the instructions in this manual may increase the risk of damage or injury and will void the warranty.

Installation Requirements

- Before installation, check the installation location in the ceiling has access to a socket outlet which is connected to a wall light switch and dimmer. If it does not, please contact a licensed electrician to arrange installation of the socket outlet, wall light switch before continuing.
- All wiring and installation of the luminaire must adhere to the latest local and national wiring rules. eg. AS/NZS 3000 Electrical installations. If unsure, please contact a licensed electrician.
- The LED downlight is rated IP44 only after it is fully installed, this must be maintained during installation.

NOTE: The LED driver and the back part of the LED downlight module are rated IP20.

- Select a suitable location for installation:
 - The mounting point must support 2 times the weight of the luminaire.
 - This luminaire is suitable for indoor or outdoor use, provided that it is installed under cover or eaves.
- This LED downlight is dimmable and has been tested at the date of publication with the dimmers listed in the specification section. The use of a LED dimmer such as the Lucci LEDlux SKU# 290998 or SKU# 290997 or SKU# 299043 dimmer is highly recommended.

NOTE: For the best dimming range, use the Lucci LEDlux SKU# 290998 dimmer and adjust the variable resistor at the minimum and maximum dimming positions on the dimmer during the installation.

NOTE: Dimming may cause buzzing sounds or a slight flicker. There may be slight delays with the LED downlight start-up or slight uneven light performance when more than one LED downlight is linked together, switched ON or dimmed. This is not a product fault and as such is not covered under warranty.

NOTE: Some dimmers have a minimum load of 20W. Ensure the dimmer position is on the maximum setting before turning on the LED downlight and adjust the dimmer down to your desired light level.

NOTE: Testing cannot account for installation variables such as variation in mains supply voltage, cable capacitance, electrical noise, transients, surges and ripple control signals (commonly found in NSW & QLD).

NOTE: The information provided is correct to the best of Beacon Lighting's knowledge at the date of publication.

- This luminaire has an insulating ceiling type IC-4 rating. Building insulation material can safely be exposed continuously to temperatures up to 90°C may abut and cover the luminaire. (Please refer to the Clearance Information section and the IC-4 Rating section in this instruction manual for further details.)
- The LED driver must be placed at least 100mm away from the LED downlight module to allow for cooling.
- The LED driver can be placed under the insulation. (Please refer to the Clearance Information section in this instruction manual for further details.)
- The LED downlight module is only suitable for use with Lucci LED Driver model#: LB-PD-2415-1-10W.

- The luminaire must not be used if the diffuser on the LED downlight module has been damaged or cracked.
- Take care not to pull any electrical wires during unpacking as this may damage the connection.
- Lay out all the components on a smooth surface and make sure no components are missing before assembling. If parts are missing, return the complete product to the place of purchase for inspection or replacement.
- Check whether the luminaire has been damaged during transport. Do not operate/install any product which appears damaged in any way. Return the complete product to the place of purchase for inspection, repair or replacement.
- Ensure power to the circuit you are working on has been switched OFF before commencing any electrical work.

Installation Directions

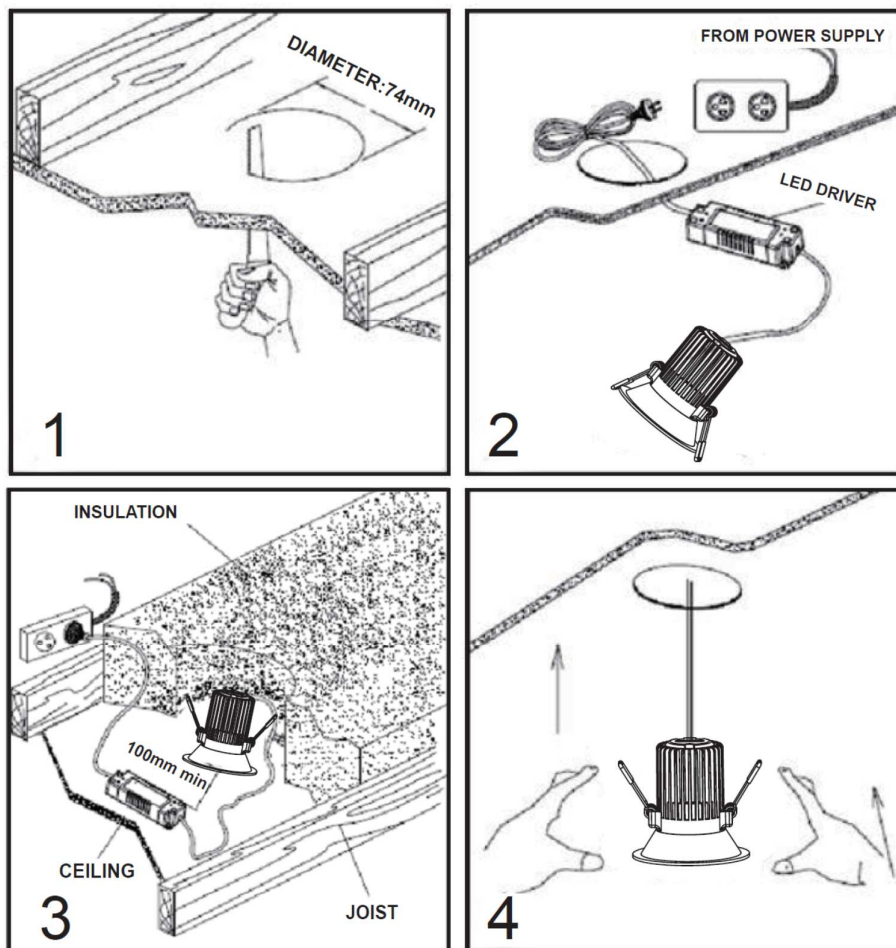
Remove all packaging material from the product and be careful not to throw away accessories that may be hidden within the packaging material.

NOTE: Plug the luminaire into a socket outlet to ensure the LED downlight is working correctly before installation.

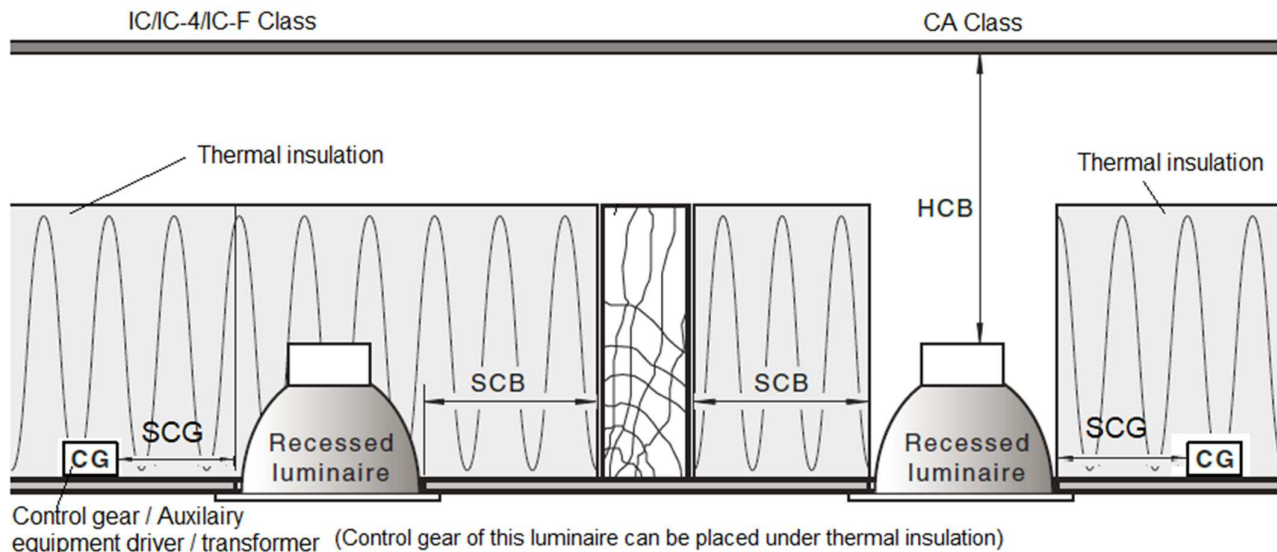
1. Cut an installation hole of \varnothing 74mm into the ceiling. (Fig.1)
2. Insert the luminaire plug into the socket outlet and ensure it is fully plugged in. (Fig.2)
3. Push the springs up and install the LED downlight module into the cut-out hole. (Fig.3)
4. Ensure all the clearance values are maintained during and after installation of the LED module, LED driver, thermal insulation, loose-fill insulation, loose combustible materials and any structural members.

NOTE: Please refer to the Clearance Information section and the IC-4 section in this instruction manual for further details. Keep the luminaire 100mm away from the LED driver to allow for cooling.

5. After the installation, switch on the luminaire to test all the lighting functions and enjoy your new lighting product.

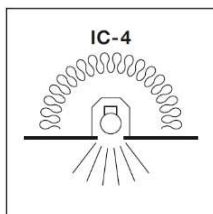


Clearance Information – AS/NZS 3000:2018 Wiring Rules Figure 4.9



LOCATION	DISTANCE	DESCRIPTION
HCB	N/A (Minimum)	Clearance between the top of the recessed luminaire and any structural members, building elements or objects above it.
SCB	50 mm (Minimum)	Clearance between the side of the recessed luminaire and any structural members, building elements or objects.
SCI	0 mm (Abutted)	Insulation can be abutted against the side of recessed luminaire and covered as per IC-4 Rating. See IC-4 Rating section for more details.
SCG	100mm	Auxiliary equipment/driver/transformer must be placed 100mm away from the luminaire. It can be placed under the thermal insulation and covered.

IC Rating – AS/NZS 60598.2.2: 2016



1. A closed luminaire that allows building insulation to come into contact with its sides and to cover it.
2. Type IC-4 recessed luminaire can be used together with building insulation that can safely be exposed continuously to temperatures up to 90°C may abut and cover the luminaire;

RISK OF FIRE – Required clearance from structural members and building elements
SCB = 50 mm

Dimming and Colour temperature

The colour temperature of the luminaire can be smoothly changed from 4000K – 2200K over the dimming range. See following table for reference.

NOTE: To ensure the consistent CCT & Diming range, it is recommended to install maximum 12 luminaires in one circuit.

Dimming range	Luminous flux	CCT
100%	700 lm	4000K
75%	391 lm	3717K
50%	123 lm	2484K
25%	34 lm	2200K

Safety tips

- Always ensure the power is OFF and the luminaire has cooled down before performing any maintenance, cleaning or making any adjustment to the luminaire.
- The external flexible cable or cord of this luminaire cannot be replaced; if the cable or cord is damaged, the luminaire shall be destroyed.
- The light source of this luminaire is not replaceable; when the light source reaches its end of life the whole luminaire shall be replaced.
- To avoid injury or damage to the luminaire, ensure that power leads and screws are secure before connecting the power.
- Select a suitable location away from liquids and hazards.
- Ensure that the luminaire does not come in contact with corrosive chemicals, etc.
- To clean, wipe with a damp clean cloth. Never soak the luminaire with water.

Troubleshooting		
PROBLEM	POSSIBLE CAUSE	SUGGESTED SOLUTION
Does not work. (New installation)	Wiring loose or no power to the downlight.	Check your circuit breaker/safety switch box and turn on the power to your circuit.
		Unplug the downlight and test in a functional socket outlet with power. If the downlight does not switch on then contact your nearest Beacon Lighting store. If the downlight is working, have your licensed electrician check the wiring or socket outlet to the downlight.
Does not work. (Existing installation)	No power to the downlight.	Check your circuit breaker/safety switch box and turn on the power to your circuit.
		Contact your nearest Beacon Lighting store.
Flickers when dimming. (New installation)	Non-compatible dimmer used.	Check the dimmer used. Ensure the dimmer used is on the list of compatible dimmers in this manual.
	Some dimmers have a variable loading adjustment function. eg. Lucci LEDlux SKU# 290998 dimmer. This may not have been adjusted during the installation of the dimmer.	The variable resistor needs to be adjusted to suit the downlight load to reduce the flickering.
Flickers when dimming. (Existing installation)	Dimmer position on low.	Ensure the dimmer position is on the maximum setting before turning on the downlights and adjust the dimmer down to your desired light level.
Buzzing sound.	Non-compatible dimmer used.	Check the dimmer used. Ensure the dimmer used is on the list of compatible dimmers in this manual.
Uneven light start-up.	Dimmer position on low when switched on.	Ensure the dimmer position is on the maximum setting before turning on the downlights and adjust the dimmer down to your desired light level.
Lights are not all with the same brightness when dim down	Very low level dimming may result in inconsistent dimming level	When multiple luminaires are installed in one circuit, you may notice small difference in illumination and some may even appear off when they are dimmed very low level. This is a normal function due to the very small current, to achieve the very low light level but allow safe movement.

Specifications	
SKU #	178200
Colour	Matt white
Rated Voltage	INPUT: 220-240V~ 50Hz, OUPUT: 27 - 39VDC, 235mA, constant current
Rated Wattage	10W
LED Specs	4000K – 2200K*, CRI > 90, 700 lumens, Dimmable *Smooth colour temperature change over the dimming range Blue light Risk Group: RG1
Dimmer Information	Highly Recommended Dimmers
	Compatible Dimmers
	Lucci LEDlux SKU# 290998, SKU# 290997, SKU# 299043
	Buster + Punch DIM-002; DIGINET LED Smart MEDM; Clipsal 31E2RUDM, 32E450TM, 32E450UDM, 31E2PUDM and 32ELEDM; HPM: Cat. 400T
Weight	0.35kg
Cut-out Size	Ø74mm
IP Rating	IP44 for the front of the LED downlight module (after installation) IP20 for the back of the LED downlight module and LED driver
Dimensions	D:84mm x H:85mm
Serviceable parts	LED downlight module and LED driver are both serviceable.
LED Driver Model #	Lucci LB-PD-2415-1-10W