

**Installation Instructions**  
**SKU# 220533 (LD-ST5010-MR16)**  
**Rated Voltage 12V**

**THANK YOU FOR PURCHASING THIS QUALITY LUCCI PRODUCT. TO ENSURE CORRECT FUNCTION AND SAFETY, PLEASE READ AND FOLLOW ALL INSTRUCTIONS CAREFULLY BEFORE USING THE PRODUCT. PLEASE KEEP THE INSTRUCTIONS FOR FUTURE REFERENCE.**

**NOTE: This fitting is 12V extra-low voltage.**

**This installation instruction applies to the 12V side of the fitting only.**

**When working with 240V, a licensed electrician is required.**

**WARRANTY:**

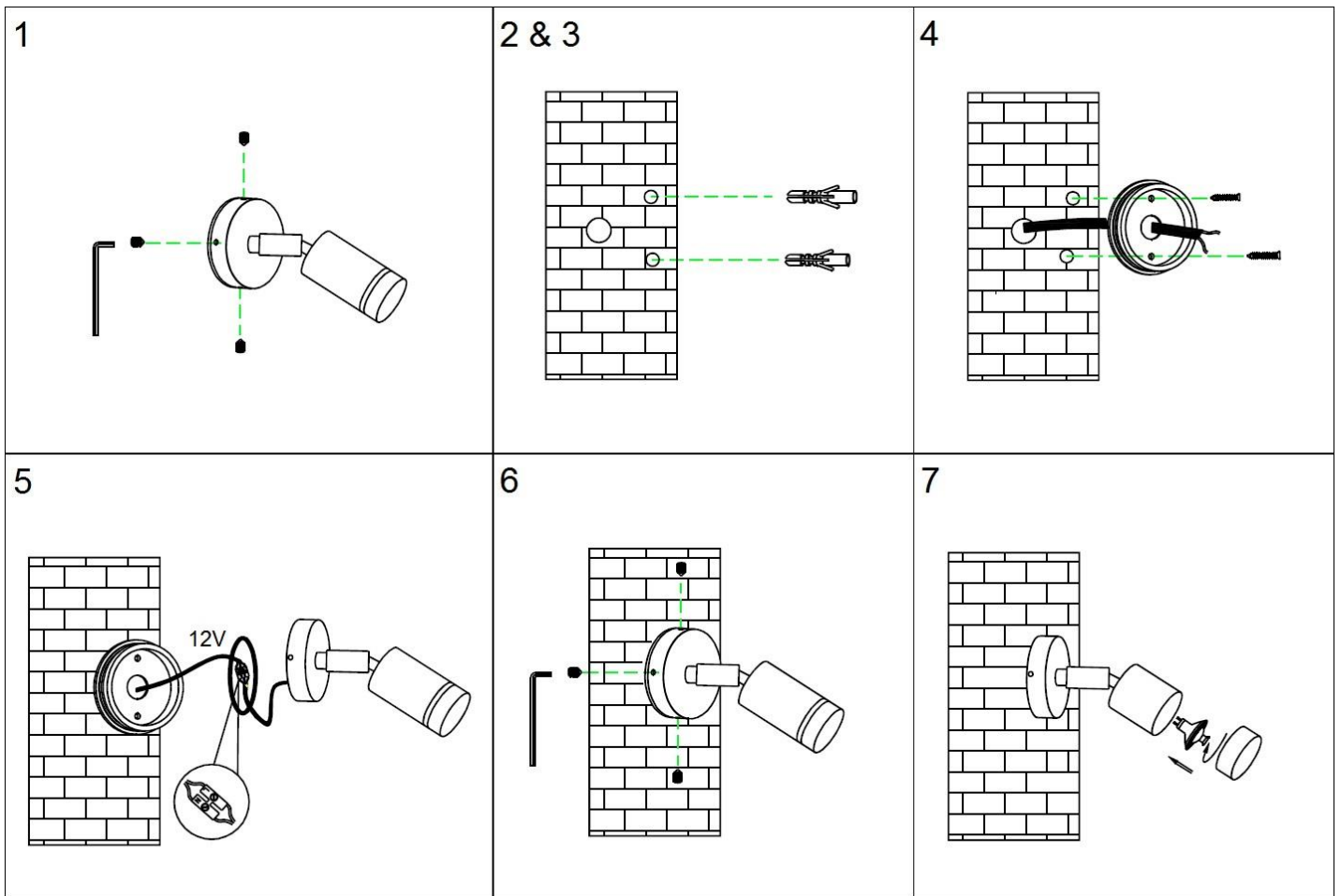
- This light fitting is covered by a 12 month warranty; please retain proof of purchase.
- Warranty will be void if there is any damage due to improper usage or modification to the fitting.

**INSTALLATION REQUIREMENTS:**

- **All wiring and installation of the light fitting must adhere to local and national wiring codes. eg. AS/NZS 3000:2007/Amendment 2:2012 Electrical installations.**  
**If unsure, please contact a licensed electrician.**
- **Select a suitable location for installation;**
  - **This fitting is protected against water penetration to IP66 standards, which means protection against ingress of dust, heavy seas or powerful jets of water.**
  - **The mounting point must support 2 times the weight of the fitting.**
  - **A clearance of 0.5m should be kept between the globe and nearest object/wall etc.**
- **Do not exceed the maximum wattage rating.**
- **Take care not to pull any electrical wires during unpacking as this may damage the connection.**
- **Lay out all the components on a smooth surface and make sure there are no component's missing before assembling.**
- **Check whether the fitting has been damaged during transport. Do not operate/install any product which appears damaged in any way. Return the complete product to the place of purchase for inspection, repair or replacement.**
- **Ensure power to the circuit you are working on has been switched OFF.**

**INSTALLATION DIRECTIONS:**

1. Remove all packaging material from the fitting.  
Remove the mounting bracket from the fitting by loosening the screws with the allen key provided.
2. Use the mounting bracket as a template to mark the screw positions onto the wall.
3. Drill holes into the wall and push the plastic screw anchors into the holes.  
Ensure the plastic screw anchors used are suitable for the mounting surface.
4. Install the mounting bracket onto the wall by using appropriately sized mounting screws, that are suitable for the mounting surface.
5. Connect the 12V supply wire to the terminal block.
6. Ensure that the wires are secure and no bare wires are exposed.
7. Install the fitting back onto the mounting bracket and tighten the screws with the allen key provided.
8. Install a globe (not included) into the fitting. Do not exceed the maximum wattage rating.



**SAFETY TIPS:**

1. Always ensure the power is OFF and the fitting has cooled down before performing any maintenance, cleaning, changing the globe or adjustment to the fitting.
2. Do not touch the globe with bare hands. Use a clean cloth, gloves or a tissue.
3. Handle the glass cover shade with care to avoid any damage or breakage.
4. Select a suitable location away from hazards or flammable material.
5. Ensure that the fitting does not come in contact with any corrosive solvents or chemicals etc.
6. To clean, wipe with a damp clean cloth. Never soak the fitting in water.

**SPECIFICATIONS:**

<b>SKU #</b>	220533
<b>MODEL #</b>	LD-ST5010-MR16
<b>RATED VOLTAGE</b>	12V
<b>RATED WATTAGE</b>	MAX. 35W
<b>LAMP HOLDER</b>	G5.3 (MR16 globe)
<b>IP RATING</b>	IP66
<b>WEIGHT</b>	0.88kg
<b>DIMENSIONS</b>	75 x 153 x 135mm (W x E x H)

