

Project

SKU# 230373

Rated Voltage 220-240V~ 50Hz

Thank you for purchasing this quality Lucci product. To ensure correct function and safety, please read and follow all instructions carefully before using the product. Please keep instructions for future reference.

Warranty

- This light fitting is covered by a 12 month warranty. Please retain proof of purchase and evidence of installation by a licensed electrician.
- Warranty will be void if there is any damage due to improper usage or modification to the fitting.


Installation requirements

- Must be installed by a licensed electrician.
- All wiring and installation of the light fitting must adhere to local and national wiring rules. eg. AS/NZS 3000:2007/Amendment 2:2012 Electrical installations.
- This fitting is rated IP44, this must be maintained during installation.
- Do not exceed the maximum wattage rating.
- Select a suitable location for installation;
 - The mounting point must support 2 times the weight of the fitting.
 - A clearance of 0.5m should be kept between the globe and nearest object/wall etc.
- Take care not to pull any electrical wires during unpacking as this may damage the connection.
- Lay out all the components on a smooth surface and make sure there are no components missing before assembling.
- Check whether the fitting has been damaged during transport. Do not operate/install any product which appears damaged in any way. Return the complete product to the place of purchase for inspection, repair or replacement.
- Ensure power to the circuit you are working on has been switched OFF.

Installation directions

1. Remove all packaging material from the product.
Remove both the covers by unscrewing them from the fitting.
Remove the mounting bracket from the fitting by unscrewing the nuts from the front of the fitting.
2. Use the mounting bracket as a template to mark the screw positions onto the wall.
Install the mounting bracket onto the wall by using appropriately sized mounting screws and anchors.
Ensure the mounting screws and anchors used are suitable for the mounting surface.
3. Connect the mains supply wire to the terminal block.

Mains Supply Wire

Earth – Yellow/Green 

Neutral – Blue or Black

Live – Brown or Red

Fitting Wire

Yellow/Green

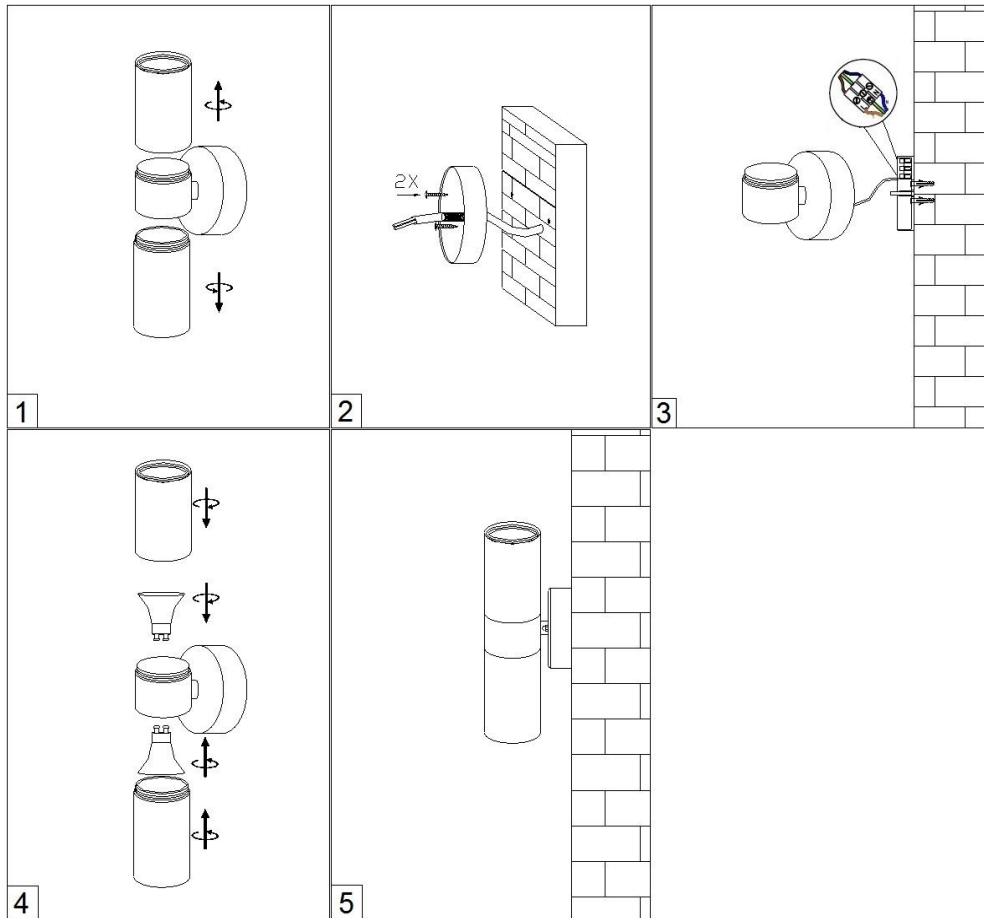
Blue

Brown

Ensure the wires are secure and no bare wires are exposed.

Install the fitting back onto the mounting bracket and tighten the nuts on the front of the fitting.

4. Install globes (not included) into the lamp holders. Do not exceed the maximum wattage rating.
Install both the covers back onto the fitting.
5. Ensure everything is tightened and secure before turning the power on to the circuit you are working on.



Safety tips

- Always ensure the power is OFF and the fitting has cooled down before performing any maintenance, cleaning, changing the globe or adjustment to the fitting.
- Do not touch the globe with bare hands. Use a clean cloth, gloves or a tissue.
- To avoid injury or damage to the fitting, ensure that power leads and screws are secure before connecting the power.
- Select a suitable location away from liquids and hazards.
- Ensure that the fitting does not come in contact with corrosive chemicals, etc.
- To clean, wipe with a damp clean cloth. Never soak the fitting with water.

Specifications

SKU #	230373
Model #	LD-KH146C
Rated Voltage	220-240V~ 50Hz
Rated Wattage	70W (2 x 35W MAX)
Lamp Holder	GU10
IP Rating	IP44
Weight	0.75kg
Dimensions	H:214mm W:85mm E:95mm