

ALERT

SKU#240312, 240313, 240314

Rated Voltage 220-240V~ 50Hz

Thank you for purchasing this quality Lucci product. To ensure correct function and safety, please read and follow all instructions carefully before using the product. Please keep instructions for future reference.

Warranty

- This light fitting is covered by a **3 year** warranty. Please retain proof of purchase and evidence of installation by a licensed electrician.
- Warranty will be void if there is any damage due to improper usage or modification to the fitting.


Installation requirements

- Must be installed by a licensed electrician.
- All wiring and installation of the light fitting must adhere to local and national wiring rules. eg. AS/NZS 3000:2007/Amendment 2:2012 Electrical installations.
- Do not exceed the maximum wattage rating.
- Select a suitable location for installation;
 - This product is suitable for indoor and outdoor use.
 - The mounting point must support 2 times the weight of the fitting.
 - This fitting must not be mounted on a surface which can be subject to vibrations.
 - This fitting is protected against water penetration to IP44 standards, which is splashing in every direction. Take note of the directional label on the fitting before installation.
- Take care not to pull any electrical wires during unpacking as this may damage the connection.
- Lay out all the components on a smooth surface and make sure there are no components missing before assembling.
- Check whether the fitting has been damaged during transport. Do not operate/install any product which appears damaged in any way. Return the complete product to the place of purchase for inspection, repair or replacement.
- Ensure power to the circuit you are working on has been switched OFF.

Installation directions

1. Remove the mounting bracket from the body of the fitting by loosening the screws on the top **using a spanner** (not included).
2. Use the mounting bracket as a template to mark the screw positions onto the wall.
Drill holes into the wall and push the plastic anchors into the holes.
Install the mounting bracket onto the wall by using the mounting screws and rubber washers provided.
Ensure the screws used are suitable for the mounting surface.
3. Loosen the screws on the cord anchorage system and insert the main supply wire through the gasket leading to **the** terminal block.
4. Connect the mains supply wire to the terminal block provided. Ensure that the wires are secure and no bare wires are exposed.

Mains Supply Wire

Earth – Yellow/Green 

Neutral – Blue or Black

Live – Brown or Red

Fitting Wire

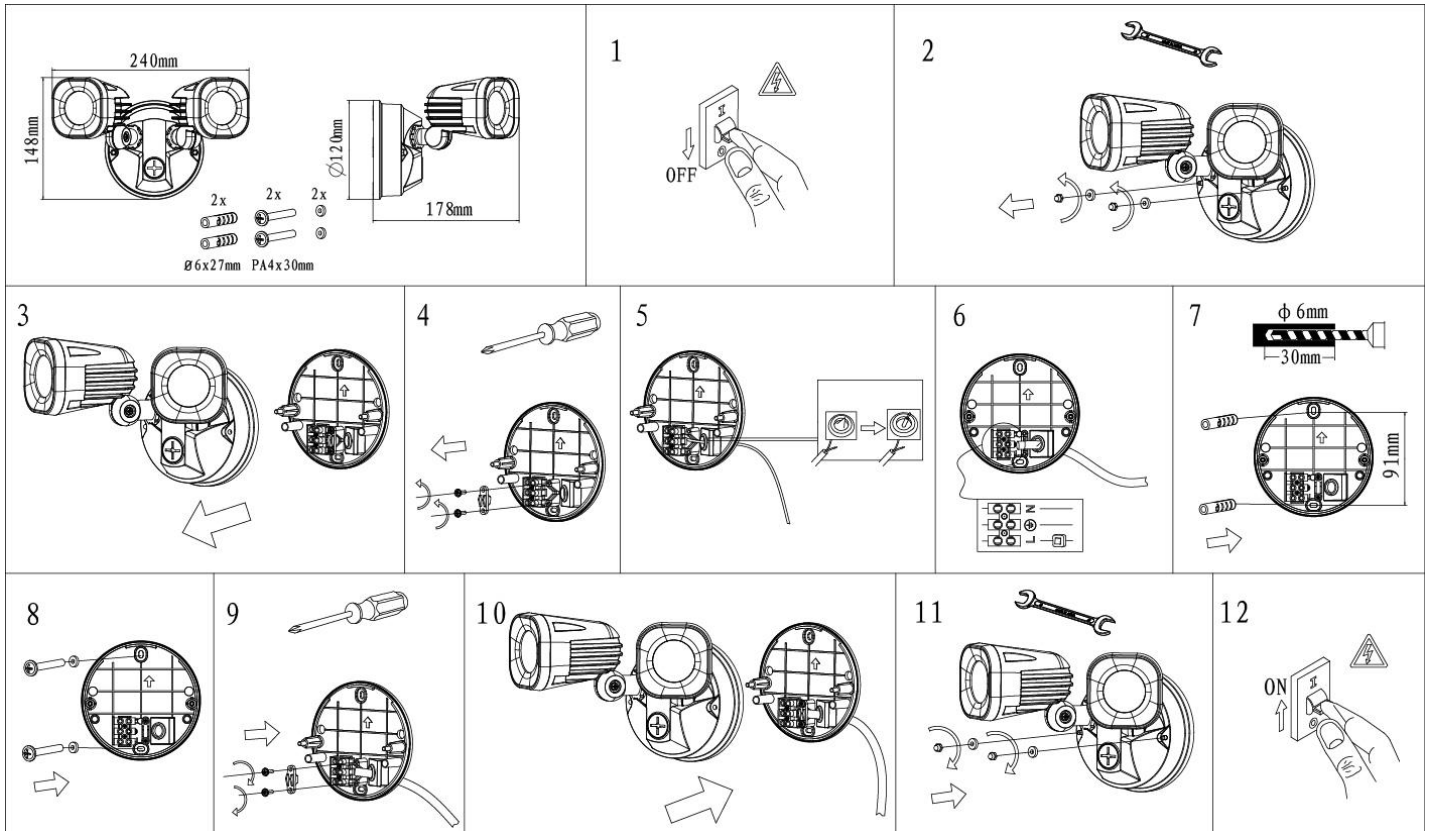
Yellow/Green

Blue

Brown

5. Place the mains supply wire in the cord anchorage system and secure by tightening the screws.

6. Install the fitting back onto the mounting bracket and tighten the two screws on the top.
7. Adjust the heads of the fitting to the desired direction.



Safety tips

- Always ensure the power is OFF and the fitting has cooled down before performing any maintenance, **cleaning, or adjustment to the fitting.**
- To avoid injury or damage to the fitting, ensure that power leads and screws are secure before connecting the power.
- Select a suitable location away from liquids and hazards.
- Ensure that the fitting does not come in contact with corrosive chemicals, etc.
- To clean, wipe with a damp clean cloth. Never soak the fitting with water.

Specifications

SKU #	240312	240313	240314
Model #	AR0258- BLK	AR0258-WH	AR0258-BC
Rated Voltage	220-240V~ 50Hz		
Rated Wattage	24W		
LED	4000K,1400lm		
Weight	0.825kg		
Dimensions	E:195MM*W:300MM*H:210MM		
IP Rating	IP44		