

## ALERT

SKU# 240725, 240726

Rated Voltage 220-240V~ 50Hz

Thank you for purchasing this quality Lucci product. To ensure correct function and safety, please read and follow all instructions carefully before assembly, installation and use. Please keep instructions for future reference.

### Warranty

- This light fitting is covered by a 3 year warranty. The warranty is from date of purchase, not the date of installation.
- If the fitting is not installed by a licensed electrician the warranty will be void.
- Please retain proof of purchase and evidence of installation by a licensed electrician.
- Warranty will be void if there is any damage due to improper usage or modification to the fitting.
- Failure to comply with the instructions in this manual may increase the risk of damage or injury and will void warranty.
- This fitting is not suitable for use with dimmer switches. Warranty will be void if the fitting is used on the same circuit which has a dimmer switch.

### Installation requirements

- Must be installed by a licensed electrician.
- All wiring and installation of the light fitting must adhere to local and national wiring rules.  
eg. AS/NZS 3000:2007/Amendment 2:2012 Electrical installations.
- Select a suitable location for installation;
  - This product is suitable for indoor and outdoor use.
  - The mounting point must support 2 times the weight of the fitting.
  - This fitting is protected against water penetration to IP44 standards, which is splashing in every direction.
  - This fitting must not be mounted on a surface which can be subject to vibrations.
  - Take note of the directional marking on the fitting before installation.
- Take care not to pull any electrical wires during unpacking as this may damage the connection.
- Lay out all the components on a smooth surface and make sure there are no components missing before assembling. If parts are missing, return the complete product to the place of purchase for inspection or replacement.
- Check whether the fitting has been damaged during transport. Do not operate/install any product which appears damaged in any way. Return the complete product to the place of purchase for inspection, repair or replacement.
- Ensure power to the circuit you are working on has been switched OFF before commencing any electrical work.

### Installation directions

1. Ensure power to the circuit you are working on has been switched OFF before commencing any electrical work.
2. **Remove the mounting bracket from the body of the fitting by loosening the screws using an allen key.**
3. Use the mounting bracket as a template to mark the screw positions onto the wall.  
Drill holes into the wall and push the plastic anchors into the holes.
4. Loosen the cord anchorage near the terminal block.
5. Push the mains supply wire through the cord entry point on the mounting bracket. Depending on the installation location, additional silicon may need to be added to maintain the IP44 rating of the fitting.
6. Connect the mains supply wire to the terminal block provided. Ensure that the wires are secure and no bare wires are exposed.

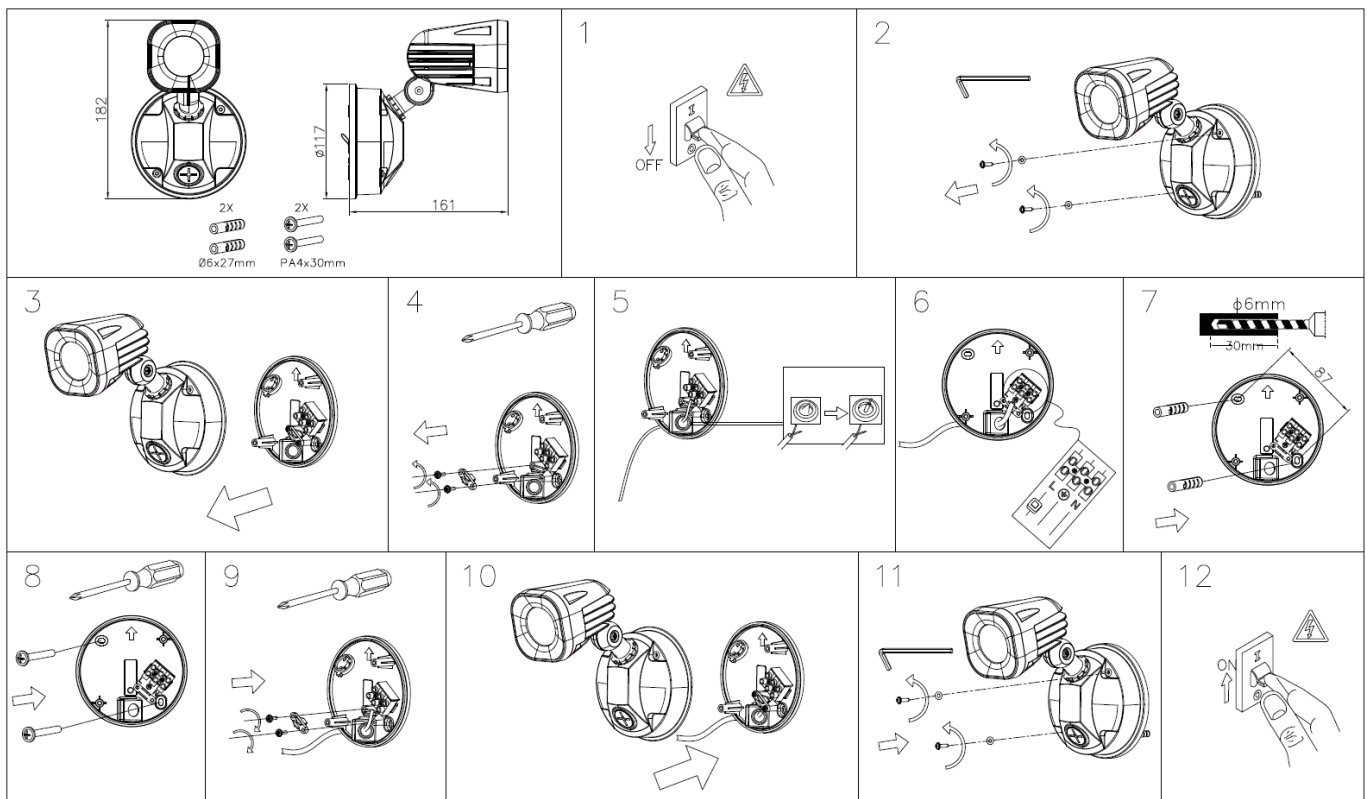
### Mains Supply Wire

Earth – Yellow/Green  
 Neutral – Blue or Black  
 Live – Brown or Red

### Wiring Label

Yellow/Green   
 N (Neutral)  
 L (Live)

7. Install the mounting bracket onto the wall by using appropriately sized mounting screws, plastic washers and anchors.
8. Ensure the screws, plastic washers and anchors used are suitable for the mounting surface.
9. Place the mains supply wire in the cord anchorage system and secure by tightening the screws again.
10. Install the fitting back onto the mounting bracket.
11. Tighten the two screws using an allen key.  
Adjust the LED heads to the desired position.
12. Switch the power to circuit back ON only after all electrical work has been fully completed and the fitting is fully assembled and is ready to use for the first time.



### Safety tips

- Always ensure the power is OFF and the fitting has cooled down before performing any maintenance, cleaning or making any adjustment to the fitting.
- To avoid injury or damage to the fitting, ensure that power leads and screws are secure before connecting the power.
- Select a suitable location away from liquids and hazards.
- Ensure that the fitting does not come in contact with corrosive chemicals, etc.
- To clean, wipe with a damp clean cloth. Never soak the fitting with water.

Specifications		
SKU #	240725	240726
Colour	Black	White
Rated Voltage	220-240V~ 50Hz	
Rated Wattage	11W	
LED	4000K, 600lm	
Weight	0.48kg	
Dimensions	E:190mm W:190mm H:220mm	
IP Rating	IP44	