

## **FORT LED 2 LIGHT SPOT**

SKU# 240754, 240755

Rated Voltage 220-240V~ 50Hz

Thank you for purchasing this quality Bayside product. To ensure correct function and safety, please read and follow all instructions carefully before assembly, installation and use of this luminaire. Please keep instructions for future reference.

### **Warranty**

- This luminaire is covered by a 2 year warranty. The warranty is from date of purchase, not the date of installation.
- If the luminaire is not assembled and installed by a licensed electrician the warranty will be void.
- Please retain proof of purchase and evidence of installation by a licensed electrician for any warranty enquiries.
- Warranty will be void if there is any damage due to improper usage or modification to the luminaire.
- Failure to comply with the instructions in this manual may increase the risk of damage or injury and will void warranty.
- This luminaire is not suitable for use with dimmer switches. Warranty will be void if the luminaire is used on the same circuit which has a dimmer switch.

### **Installation Requirements**

- Must be assembled and installed by a licensed electrician.
- All wiring and installation of the luminaire must adhere to the latest local and national wiring rules. eg. AS/NZS 3000 Electrical Installations.
- This luminaire is a Class I product and must be earthed.
- This luminaire is rated IP44. This must be maintained during installation.
- Select a suitable location for installation:
  - This luminaire is suitable for indoor or outdoor use.
  - The mounting point must support 2 times the weight of the luminaire.
  - This luminaire is protected against water penetration to IP44 standards, which is splashing water from any direction.
  - This luminaire is not suitable for dimming and should not be used with a circuit which has a dimmer.
- The LED lights are not suitable for dimming and should not be used with a circuit which has a dimmer. Warranty will be void if the luminaire is used on the same circuit which has a dimmer switch
- Take care not to pull any electrical wires during unpacking as this may damage the connection.
- Lay out all the components on a smooth surface and make sure there are no components missing before assembling. If parts are missing, return the complete product to the place of purchase for inspection or replacement.
- Check whether the luminaire has been damaged during transport. Do not operate/install any product which appears damaged in any way. Return the complete product to the place of purchase for inspection, repair or replacement.
- Ensure power to the circuit you are working on has been switched OFF before commencing any electrical work.

## Installation Directions

1. Remove all packaging material from the product and be careful not to throw away accessories that may be hidden within the packaging material. If assembly is required, place the luminaire on a smooth non-scratch surface.
2. Loosen the two screws on the front of the luminaire and carefully place the screws and washers aside. (Fig A)
3. Remove the body of the luminaire from the mounting bracket. (Fig B)
4. Use the mounting bracket as a template to mark the screw positions onto the wall. (Fig C)

NOTE: Ensure the directional arrow is facing up on the mounting bracket.

5. Drill holes into the wall and install anchors. Ensure the anchors used are suitable for the mounting surface (Fig D & E)
6. Push the mains supply wire through the cord entry point on the mounting bracket. (Fig F)

**NOTE: It is recommended that a non-corrosive bead of silicone be applied before installation to ensure no water can run down the cable and into the fitting.**

7. Install the mounting bracket onto the wall by using appropriately sized mounting screws and washers. Ensure the mounting screws used are suitable for the mounting surface and the surrounding environment. (Fig F)

NOTE: Ensure the directional arrow is facing up on the mounting bracket.

8. Connect the mains supply wire to the terminal block. Ensure the wires are secure and no bare wires are exposed. (Fig G)

### Mains Supply Wire

Earth – Yellow/Green

Neutral – Blue or Black

Live – Brown or Red

### Luminaire Wire

Yellow/Green

Blue or N

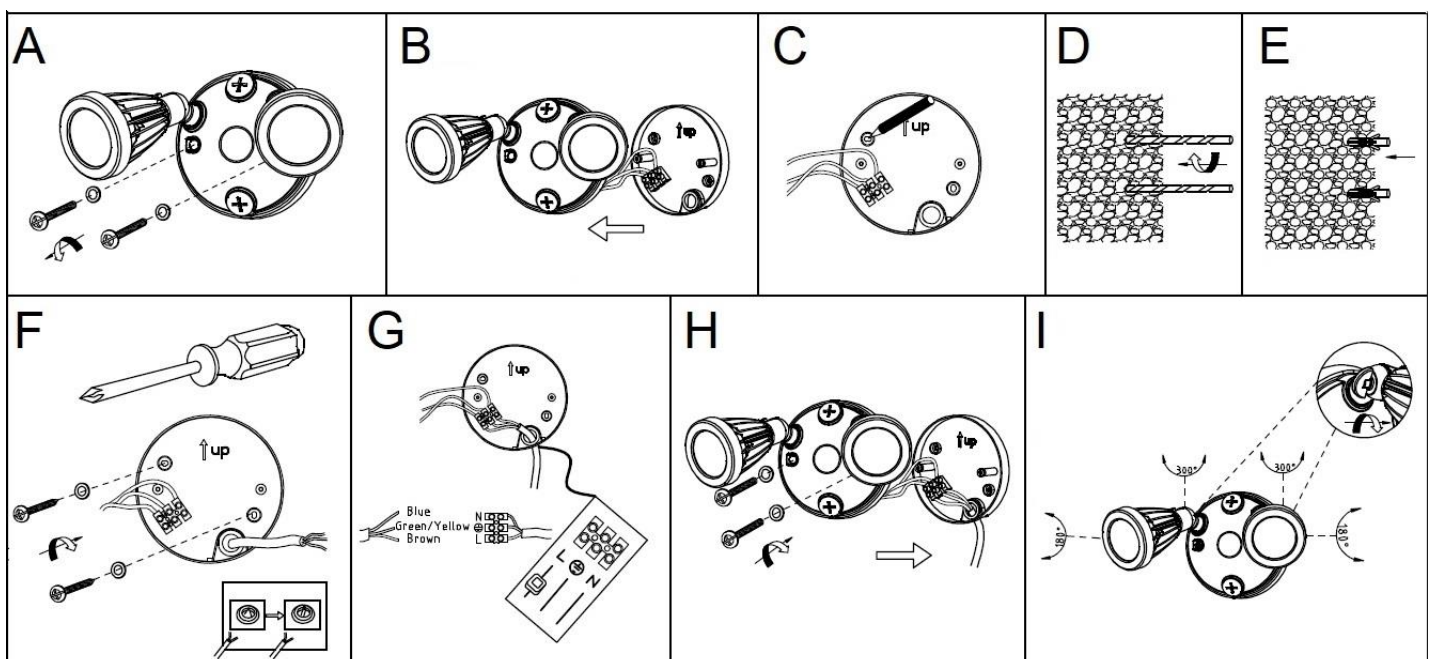
Brown or L

9. Install the luminaire body back onto the mounting bracket. Take care not to damage any of the internal wires and secure by installing the screws and washers onto the front of the luminaire. (Fig H)

10. Adjust the LED heads to the desired position.

**NOTE: When adjusting the heads, do not bend more than 180° and do not rotate more than 300° as this may damage the internal wires and void the warranty. (Fig I)**

11. Switch the power to circuit back ON only after all electrical work has been fully completed and the luminaire is fully assembled and is ready to use for the first time. Test all the lighting functions and enjoy your new luminaire



## Safety Tips

- Always ensure the power is OFF and the luminaire has cooled down before performing any maintenance, cleaning or making any adjustment to the luminaire.
- To avoid injury or damage to the luminaire, ensure that power leads and screws are secure before connecting the power.
- Do not use the luminaire if the protective shield has been damaged or cracked. The protective shield cannot be replaced; if the protective shield is damaged or cracked, the luminaire shall be replaced and destroyed.
- To clean, wipe with a soft damp cloth. Do NOT soak or immerse the luminaire in water or other liquids.
- Ensure that the luminaire does not come in contact with corrosive chemicals/solvents or abrasive cleaners etc.
- The LEDs are not replaceable and there are no serviceable parts, do not attempt to dismantle or open the product.

## Specifications

SKU #	240754	240755
Colour	Matte Black	Matte White
Rated Voltage	220-240V~ 50Hz	
Rated Wattage	16W (2x 8W)	
LED	1000 lumens, 4000K, Non-dimmable	
IP Rating	IP44	
Weight	0.9kg	
Dimensions	H:240mm W:345mm E:170mm MAX	