

## **RYE EXTERIOR SENSOR WALL BRACKET**

SKU# 240825, 240826, 240827

Rated Voltage 220-240V~ 50Hz

Thank you for purchasing this quality Lucci product. To ensure correct function and safety, please read and follow all instructions carefully before assembly, installation and use of this luminaire. Please keep instructions for future reference.

### **Warranty**

- This luminaire is covered by a 12 month warranty. The warranty is from date of purchase, not the date of installation.
- If the luminaire is not assembled and installed by a licensed electrician the warranty will be void.
- Please retain proof of purchase and evidence of installation by a licensed electrician for any warranty enquiries.
- Warranty will be void if there is any damage due to improper usage or modification to the luminaire.
- Failure to comply with the instructions in this manual may increase the risk of damage or injury and will void warranty.

### **Installation Requirements**

- Must be assembled and installed by a licensed electrician.
- All wiring and installation of the luminaire must adhere to the latest local and national wiring rules.  
eg. AS/NZS 3000 Electrical installations.
- This luminaire is a Class I product and must be earthed during wiring and installation.
- This luminaire is rated IP44. This must be maintained during wiring and installation.
- Replace any cracked protective lamp shade to maintain IP rating when using this luminaire.
- Do not exceed the maximum wattage rating. Must use an energy saving LED or CFL globe only.
- Select a suitable location for installation:
  - This luminaire is suitable for indoor or outdoor use.
  - This luminaire is rated against water penetration to IP44 standards, which is water splashing from any direction.
  - The mounting point must support 2 times the weight of the luminaire.
- Take care not to pull any electrical wires during unpacking as this may damage the connection.
- Lay out all the components on a smooth surface and make sure there are no components missing before assembling. If parts are missing, return the complete product to the place of purchase for inspection or replacement.
- Check whether the luminaire has been damaged during transport. Do not operate/install any product which appears damaged in any way. Return the complete product to the place of purchase for inspection, repair or replacement.
- Ensure power to the circuit you are working on has been switched OFF before commencing any electrical work.

**PIR sensor information**

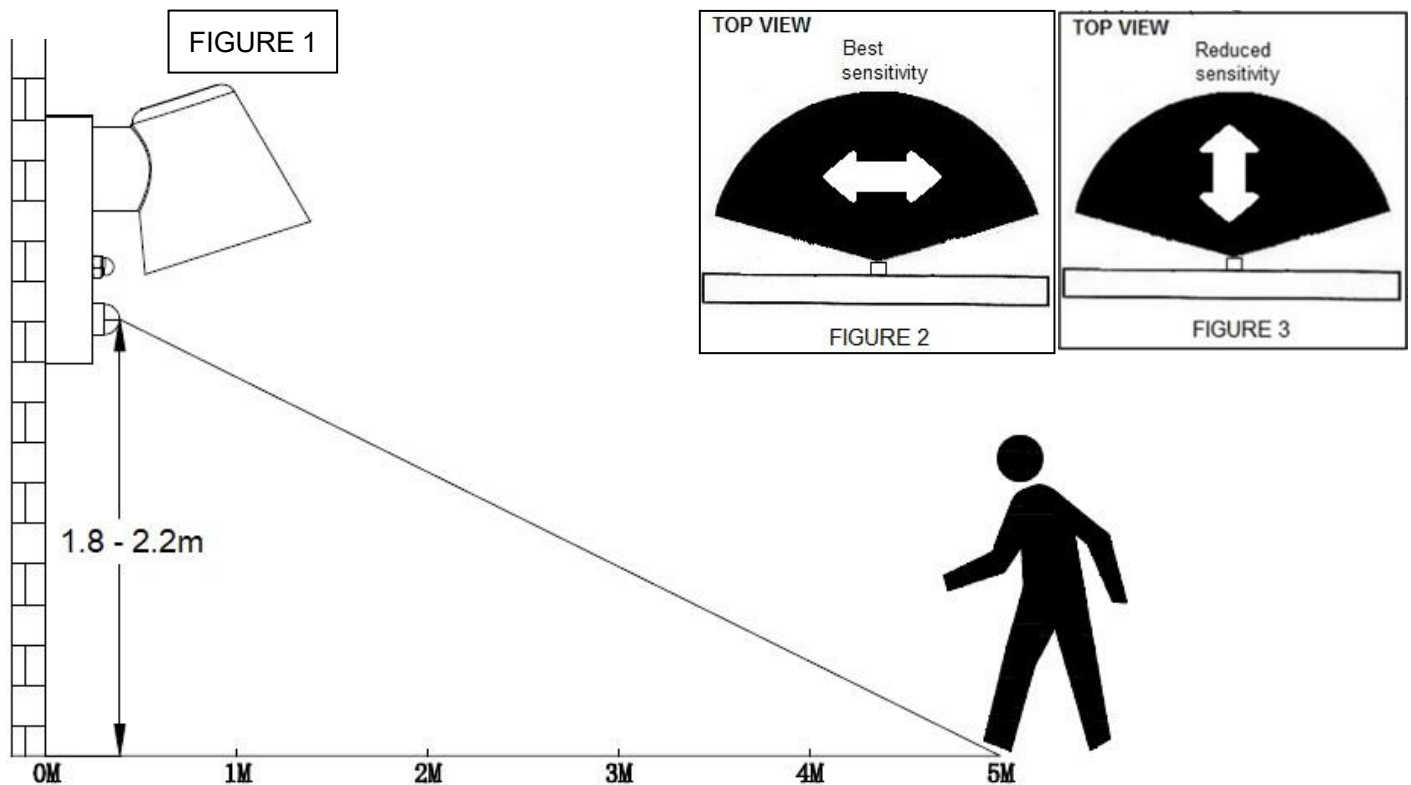
**PIR (PASSIVE INFRA RED) SENSOR:**

The luminaire has a PIR (Passive Infra Red) sensing device which continuously scans the operating zone and immediately switches the luminaire on when it detects movement in that area. Whenever movement is detected within the range of the sensor, the luminaire will switch on automatically to illuminate the area. While there is movement within the sensor range, the luminaire will remain on.

**SENSOR LOCATION & INFORMATION:**

To find a suitable location for installation, please take into consideration the following points:

- The ideal mounting height for the luminaire is between 1.8m to 2.2m above the detection area. Fig 1.
- The detection area is approximately 5 metres away at an angle of 90° wide. This may vary depending on the mounting height and location.
- The detection area may also alter at different temperatures. PIR sensors are more sensitive in cold weather than warm weather.
- The sensor has better sensitivity with movement across the detection area. Fig 2.
- The sensor has reduced sensitivity with movement towards and away from the detection area. Fig 3.
- If movement is made walking directly towards or away from the sensor and not across, the apparent detection range will be substantially reduced.
- To avoid false triggering, the sensor should be directed away from potential heat sources, such as barbecues, air-conditioners, air vent etc.
- Also avoid areas with electromagnetic disturbance, outside lighting, moving cars, trees or pets etc.
- Avoid installing the luminaire in close proximity or on the same circuit to any fluorescent luminaires or ceiling fans. RFI (Radio Frequency Interference) may cause the luminaire to switch on unintentionally.
- Do not aim the sensor towards reflective surfaces, such as smooth white walls, swimming pools etc.
- To avoid damage to the sensor, do not aim the sensor towards the sun.
- It is recommended that the luminaire is installed on its own switch and does not interconnect with other lights on the same switch as it may cause false triggering.



**Installation Directions**

1. Remove all packaging material from the product and be careful not to throw away accessories that may be hidden within the packaging material. If assembly is required, place the luminaire on a smooth non-scratch surface. (Fig 1)
2. Remove the mounting bracket from the luminaire (B) by loosening the nuts (A).  
Remove the protective lamp shade (C) from the luminaire (B) by loosening the screws (B). (Fig 2)
3. Use the mounting bracket as a template to mark the screw positions on the wall. (Fig 2)
4. Install the mounting bracket onto the wall by using appropriately sized mounting screws (E), grommets, flat washers and anchors (D). Ensure the screws (E) and anchors (D) used are suitable for the mounting surface and the surrounding environment. (Fig 2)


**NOTE: A non-corrosive bead of silicone MUST be applied before installation onto the wall ensuring that no water can run down into the cabling.**

5. Connect the mains supply wire to the terminal block (F). (Fig. 3)

**Mains Supply Wire**

- Earth – Yellow/Green
- Neutral – Blue
- Live – Brown

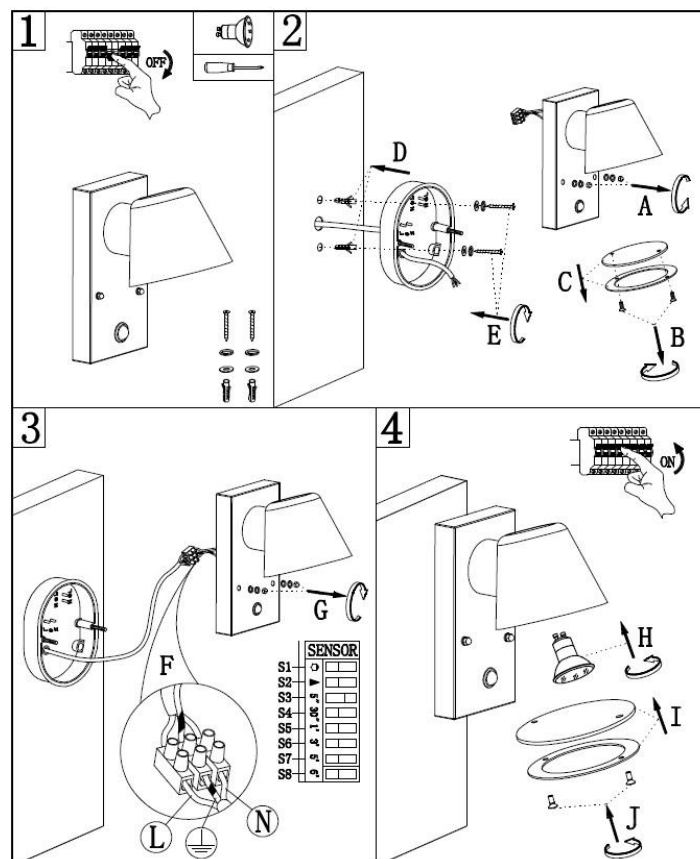
**Luminaire Wire / Terminal Block**

- Yellow/Green or 
- Blue or N
- Brown or L

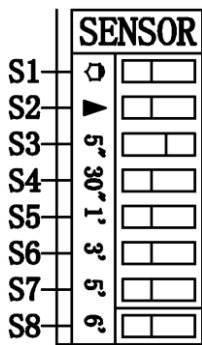
6. Ensure the wires are secure and no bare wires are exposed. (Fig. 3)
7. Set the sensor switch settings. Refer to the switch settings on the next page.

**NOTE: This is a one-time setting and must be done by a licensed electrician.**

8. Install the luminaire (B) back onto the mounting bracket and secure by tightening the nuts (G), flat washers and grommets. (Fig. 3)
9. Install a globe (H - not included) into the lamp holder. Must use an energy saving LED or CFL globe only. Do not exceed the maximum wattage rating. (Fig. 4)
10. Install the protective lamp shade (I) back onto the luminaire and secure by tightening the screws (J). Do not overtighten the screws (J) as it may crack the protective lamp shade (I). (Fig. 4)
11. After the installation, switch on the luminaire to test and enjoy your new lighting product.



## Sensor Switch Settings



**NOTE:** Any changes to the sensor switch settings must be done by a licensed electrician.

**NOTE:** Ensure power to the circuit you are working on has been switched OFF before commencing.

### LUX LEVEL:

The lux control module has a built-in sensing device (photocell) that detects daylight and darkness.

Set the switch S1 ( ) to the **left** position means that the luminaire will work at both day and night.

Set the switch S1 ( ) to the **right** position will only work at night.

**NOTE:** If you want to test the detection area of the PIR sensor, please wait for the ambient light level is below 20 lux.

### ADJUSTING THE SENSITIVITY:

The sensitivity switch S2 ( ) means the distance which PIR Sensor can be triggered by movement body.

Set the S2 switch to the **left** position, the PIR sensor can be triggered by movement body less than 5 meters.

Set the S2 switch to the **right** position, the PIR sensor can be triggered by movement body less than 3 meters.

### DURATION TIME:

The length of time the light will remain switched on after activation can be adjusted from 5secs to 8mins

(Switches: S3=5sec, S4=30sec, S5=1min, S6=3mins, S7=5mins, S8=8mins).

For example, slide the switch S3 to the **right** position will activate the duration time to be 5 seconds.

**NOTE:** Only one duration time switch can be selected. Do not have more than one switch (S3 – S8) in the right position, the duration time setting will not work.

**NOTE:** Once the light has been triggered by the PIR sensor, any subsequent detection will start the timed period again from the beginning, the light will remain on until there is no movement detected by the PIR sensor.

### MANUAL MODE: (Sensor Override Function)

Manual mode is used when you want the luminaire to be constantly on. The PIR sensor will be disabled and is not affected by the duration time and lux level settings.

- During normal use the wall switch is in the ON position and the luminaire is in AUTO MODE with the PIR sensor detecting any movement and the luminaire will switch on and off accordingly.

- To switch into MANUAL MODE, turn the wall switch off and on twice within three seconds.

Wall switch action: OFF → ON → OFF → ON.

Wait for 3 seconds and the luminaire will turn on and the luminaire will be in MANUAL MODE.

**NOTE:** If the wall switch action is done only once or more than twice, the luminaire will not enter into MANUAL MODE.

- To change back to AUTO MODE, turn the wall switch off and on, the luminaire will enter “warm-up” mode and the luminaire will remain on for about 15 seconds. After this the luminaire will turn off and the luminaire will be in AUTO MODE.

Wall switch action: OFF → ON

## Safety Tips

- Always ensure the power is OFF and the luminaire has cooled down before performing any maintenance, cleaning, changing the globe or making any adjustment to the luminaire.
- To avoid injury or damage to the luminaire, ensure that power leads and screws are secure before connecting the power.
- The luminaire must not be used if the protective shield has been cracked. Replace any cracked protective shield before using the luminaire again.
- Ensure that the luminaire does not come in contact with corrosive chemicals/solvents or abrasive cleaners etc.
- To clean, wipe with a damp clean cloth. Do NOT soak or immerse the luminaire in water or other liquids.

## Specifications

SKU #	240825	240826	240827
Colour	Black	White	Stainless Steel
Rated Voltage	220-240V~ 50Hz		
Rated Wattage	1 x 10W Max. (Energy saving LED or CFL globe only)		
Lamp Holder	GU10		
Weight	0.7kg		
IP Rating	IP44		
Dimensions	H:190mm W:115mm E:180mm		