

Downlights



Exclusive to Beacon Lighting





Downlights

2011 - 2012

Aquatran Transformer	43	Fozz Opera Downlight	33
ATCO Iron Core Transformer.....	39	Fozz Vog Downlight	32
ATCO LED Transformer.....	40	Isolite Tranformer Isolator	39
ATCO Viper Transformer	40	Isolite Transformer Guard.....	39
Black Light Protekta Downlight.....	10	Lamp Holder Assembly.....	43
Budget Downlight Kit.....	38	LEDlux Conversion Plates	30-31
CNC Recatangle Downlight	8-9	LEDlux Downlight	28-29
CNC Round and Square Downlight	11	Lucci ATCO Possum Transformer.....	42
Comparda Mini Downlight	17	Lucci Transformers.....	41-42
Conversion Plates.....	37	Project R80 Downlight	36
Envirolux CNC.....	24	Protekta Heatsink.....	13
Envirolux CNC Round	23	Protekta Heatsink Downlights	12
Envirolux Neptune	25	Recessed Downlight	36
Envirolux Protekta Kit.....	26-27	Rotating Twist Front Downlight	14-15
Envirolux Tilt CNC	23	Round Twist Downlight.....	18-19
Envirolux Triton	24	Stainless Steel Downlight	6
Envirolux Twist Fixed Downlight.....	22	Starlight Mini Downlight.....	35
Envirolux Twist Gimble Downlight.....	20-21	Triangle Downlight	7
Fozz Cronos	34	Twist Front Square Downlight.....	16
Fozz Planet.....	34		

This catalogue showcases our extensive range of downlights. Downlights are a necessity for any home and can be coupled with other light fittings such as decorative pendants, energy saving lighting and table and floor lamps. There are various types of downlights available which include halogen, low energy and LED which will suit any home, it just all depends on what your requirements are.

Halogen

Halogen downlights have been receiving some bad press coverage over the past years, this is mostly attributed to the apparent risk of fire and the apparent high cost to run. However, when deciding on what downlights are appropriate for your project it is important to weigh up all the benefits and shortfalls of each product.

Benefits

- Very bright (require less lights to light a larger area)
- Have directional light (light can be positioned to highlight features around the home)
- Warm comforting colour
- Dimmer-able
- Great colour rendering (how correct the colours in the room appear as compared with perfect daylight)
- Very small in design
- Affordable to purchase

Shortfalls

- Generate significant heat (air conditioners need to work harder).
- Risk of fire (if installed correctly according to the wiring code of Australia and a protekta heatsink is used this should not be a concern).
- Considered inefficient (approximately 12-15 lumens per watt, halogen downlights use approximately 50-55 watts per light fitting however generally you need less of them to light the same sized area). There are now however very high performing halogen globes in both 20 watt and 35 watt where for example the 35 watt gives out as much light as a standard 50 watt halogen lamp, therefore reducing your energy consumption.

Halogen downlights especially when used with high performance halogen globes and protekta safety heatsinks have many benefits in interior design.

To further reduce energy consumption when using halogen downlights consider having multiple switches and dimmers so that areas where the lights are not required can be turned off.

Low Energy

Low energy downlights usually refers to downlights that use fluorescent tubes, this could be CFL's which have a built in ballast or PL tubes which have a separate ballast.

Low energy downlights usually have wattages ranging from 11 watts up to around 25 watts. The higher the watts generally the brighter the product, but this is not always the case. With some fluorescent globes the design of the globe may influence the light output and the efficiency of the globe, for instance a 11 watt GU10 lamp will give you approximately 300 lumens (measure of light) however a 11 watt

spiral globe can give you 500-600 lumens. So depending on what area you intend on lighting up there may be different products which need to be used to get the desired light level.

Benefits

- Relatively inexpensive to purchase
- Energy efficient (27-45 lumens per watt)
- Large range to choose from
- Choice of colour temperature (cool or warm colour)
- Long life of globes

Shortfalls

- Generally larger downlights than halogen or LED
- Non dimmer-able (some dimmer-able products available but limited selection and quite expensive compared to non dimmer able)
- Colour rendering not as good as halogen and some LED
- Takes time to warm up to full brightness, generally less than 1 minute
- Non directional light, not appropriate for highlighting features around the home
- Contains very small amounts of Mercury which is a dangerous heavy metal (the amount is less than that contained in a watch battery and poses no risk if the globe is not broken)

Super Low Energy LED

LED (light emitting diodes) could be the answer to all concerns about downlights, however the technology is still very new and advances are being made daily. LED downlights usually range in wattage from 3 watts up to 16 watts. Again generally the higher the wattage the brighter the downlight, but this is not always the case some higher wattage downlights generate less light, so therefore it is important to know the lumens (measure of light) per watt and the total lumens.

Benefits

- Very energy efficient (30 -75 lumens per watt, and advancing)
- Small size like halogen
- Very low heat output
- Good colour rendering on most items, (some cheaper LED downlights may have poor colour rendering)
- Instant full brightness
- Choice of cool or warm colour
- Directional light like halogen
- Very long life
- No globes to replace over the life of the downlight

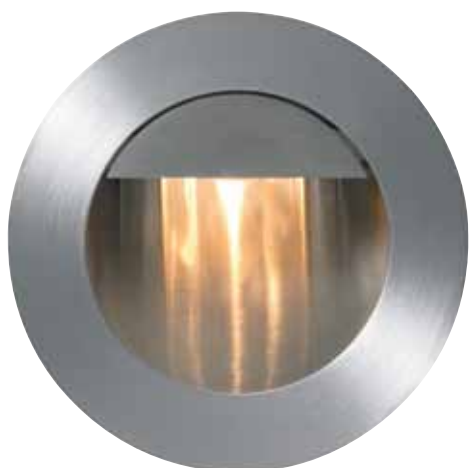
Shortfalls

- Expensive initial purchase (but saves money over the life of the product due to low energy consumption and long life)
- Not many dimmer-able options available

Beacon Lighting can have an accredited lighting consultant look at your plans or even visit your home and come up with the best downlights to suit your home decor, uses, energy saving aspirations, safety requirements and budget.



Stainless Steel Downlight



A



B



C



D

A
**Stainless Steel Round
Internal Wall Light**
sku 160361

316 stainless steel
Dia 90mm **Depth** 45mm
Cut - out 75mm
12 volt 1 x 20 Watt Max G4
globe included
transformer not included

B
**Stainless Steel Square
Internal Wall Light**
sku 160362

316 stainless steel
H 90mm **W** 100mm
Cut - out 75 / 80mm
12 volt 1 x 20 Watt Max G4
globe included
transformer not included

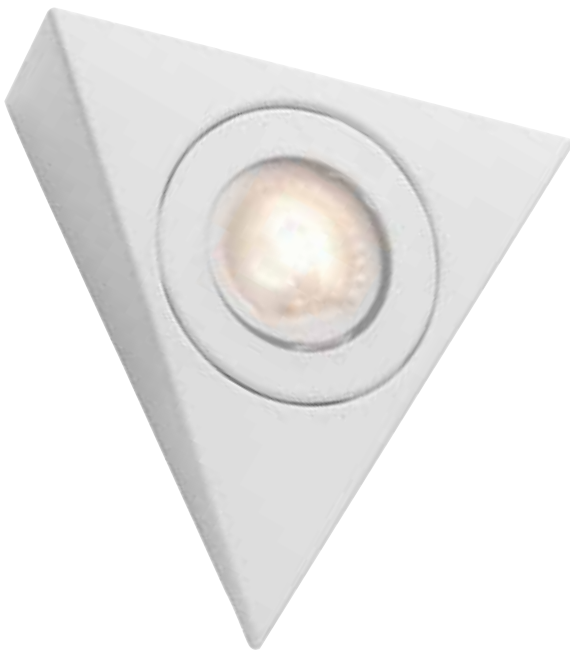
C
**Stainless Steel Square
Downlight**
sku 160402
kit 160145*

316 stainless steel
H 92mm **W** 92mm **Depth** 25mm
Cut - out 75mm
12 volt 1 x 50 Watt Max MR16

D
**Stainless Steel Round
Downlight**
sku 160403
kit 160146*

316 stainless steel
Dia 90mm **Depth** 25mm
Cut - out 75mm
12 volt 1 x 50 Watt Max MR16

*Kits include Lucci TL060M electronic transformer & 5000 hour globe.



A

A
Triangle Fixed Downlight
sku **160250**

white
H 150mm W 135mm Dia 40mm
12 volt 1 x 50 Watt Max G4
(globe not included)



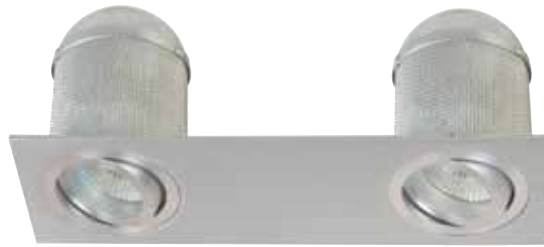
B

B
Triangle Fixed Downlight
sku **160251**

brushed chrome
H 150mm W 135mm Dia 40mm
12 volt 1 x 50 Watt Max G4
(globe not included)



CNC Rectangle Downlight



A



B



C

A
CNC 2lt Rectangle Downlight
sku **160344**
kit **160335***

tilt downlight, spun aluminium with protekta heatsink and floating ceramic lampholder

W 90mm **L** 270mm **Depth** 58mm

Cut - out 258mm x 82mm

12 volt 2 x 50 Watt Max MR16

*Kit includes 1 x Lucci 105VA electronic transformer and 2 x 5000 hour globe

B
CNC 3lt Rectangle Downlight
sku **160345**
kit **160336***

tilt downlight, spun aluminium with protekta heatsink and floating ceramic lampholder

W 90mm **L** 450mm **Depth** 58mm

Cut - out 442mm x 83mm

12 volt 3 x 50 Watt Max MR16

*Kit includes 1 x Lucci 150VA electronic transformer and 3 x 5000 hour globe

C
CNC 4lt Rectangle Downlight
sku **160346**
kit **160337***

tilt downlight, spun aluminium with protekta heatsink and floating ceramic lampholder

W 90mm **L** 630mm **Depth** 58mm

Cut - out 622mm x 83mm

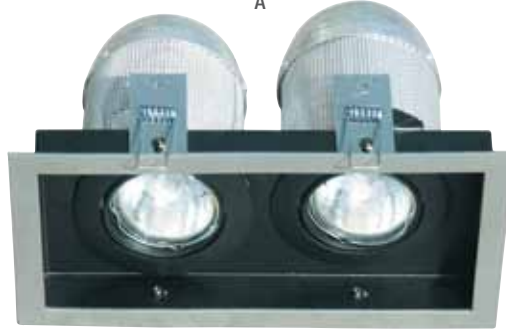
12 volt 4 x 50 Watt Max MR16

*Kit includes 2 x Lucci 105VA electronic transformer and 4 x 5000 hour globe

Black Light Protekta Downlight



A



B



C



D

A Black Light II Protekta Downlight

sku **160252**
Kit **160056***

low glare halogen downlight
with protekta heatsink
in black and silver

W 120mm **L** 120mm

Depth 170mm

Cut - out 109mm x 100mm
1 x 50 Watt MR16

*Kit includes Lucci TL060M
electronic transformer & 5000
hour globe

B Black Light II Protekta Twin Downlight

sku **160253**
Kit **160057***

low glare twin halogen
downlight with protekta
heatsink in black and silver

W 120mm **L** 225mm

Depth 170mm

Cut - out 210mm x 109mm
2 x 50 Watt MR16

*Kit includes Lucci 105VA
electronic transformer & 2 x
5000 hour globe

C Black Light II Protekta Triple Downlight

sku **160254**
Kit **160058***

low glare triple halogen
downlight with protekta
heatsink in black and silver

W 120mm **L** 325mm

Depth 170mm

Cut - out 310mm x 109mm
3 x 50 Watt MR16

*Kit includes Lucci 150VA
electronic transformer & 3 x
5000 hour globe

D Black Light II Protekta Quad Downlight

sku **160255**
Kit **160059***

low glare quad halogen
downlight with protekta
heatsink in black and silver

W 120mm **L** 425mm

Depth 170mm

Cut - out 310mm x 109mm
3 x 50 Watt MR16

*Kit includes 2 x Lucci 105VA
electronic transformer & 4 x
5000 hour globe

CNC Round and Square Downlight

Now includes heatsinks



A



B



C



D

A
CNC Fixed Round Downlight
 sku 160256
 Kit 160028*

fixed downlight, spun aluminium with protekta heatsink and floating ceramic lampholder

Dia. 400mm **Depth** 55mm
Cut - out 75mm
 12V 1 x 50 Watt Max MR16

B
CNC Fixed Square Downlight
 sku 160257
 Kit 160029*

fixed downlight, spun aluminium with protekta heatsink and floating ceramic lampholder

W 80mm **L** 80mm
Depth 55mm
Cut - out 75mm
 12V 1 x 50 Watt Max MR16

C
CNC Tilt Gimble Round Downlight
 sku 160258
 Kit 160031*

gimble downlight, spun aluminium with protekta heatsink and floating ceramic lampholder

Dia. 92mm **Depth** 45mm
Cut - out 82mm
 12V 1 x 50 Watt Max MR16

D
CNC Tilt Gimble Square Downlight
 sku 160259
 Kit 160032*

gimble downlight, spun aluminium with protekta heatsink and floating ceramic lampholder

W 92mm **L** 92mm
Depth 45mm
Cut - out 82mm
 12V 1 x 50 Watt Max MR16

* Kits include Lucci TL060M electronic transformer & 5000 hour globe.

Protekta Heatsink Downlights



A



B



C



D

Protect your home from the risk of fire and save on energy bills.

The Protekta Heatsink downlight is a simple way to reduce the risk of fire in your home and reduce your long term heating and cooling bills. Insulate right around your downlight with this brilliant design.

A
**Protekta Heatsink
Fixed Downlight**
sku **160275**
kit **160150***

fixed diecast aluminium
downlight with floating ceramic
lampholder in white
Dia 80mm Depth 123mm
Cut - out 73mm
12 volt 1 x 50 Watt Max MR16

B
**Protekta Heatsink
Fixed Downlight**
sku **160276**
kit **160151***

fixed diecast aluminium
downlight with floating ceramic
lampholder in brushed chrome
Dia 80mm Depth 123mm
Cut - out 73mm
12 volt 1 x 50 Watt Max MR16

C
**Protekta Heatsink
Gimble Downlight**
sku **160277**
kit **160152***

gimble diecast aluminium
downlight with floating ceramic
lampholder in white
Dia 103mm Depth 123mm
Cut - out 90mm
12 volt 1 x 50 Watt Max MR16

D
**Protekta Heatsink
Gimble Downlight**
sku **160278**
kit **160153***

gimble diecast aluminium
downlight with floating ceramic
lampholder in brushed chrome
Dia 103mm Depth 123mm
Cut - out 90mm
12 volt 1 x 50 Watt Max MR16

* Kits include Lucci TL060M electronic transformer & 5000 hour globe.



A

A
Protekta Heatsink Fixed
sku **160273**

retro fit protecting device for low voltage downlights
Dia 70mm **Depth** 120mm
(allows thermal insulation to be abutted to the side of the downlight. It can be no more than 100mm thick)



B

B
Protekta Heatsink Gimble
sku **160274**

retro fit protecting device for low voltage downlights
Dia 90mm **Depth** 120mm
(allows thermal insulation to be abutted to the side of the downlight. It can be no more than 100mm thick)

Rotating Twist Front Downlight

Compatible with
Lucci Retro-fit
protektka heatsink



A

A Rotating Twist Front Gimble Round Downlight

sku **160225**
kit **160112***

gimble diecast aluminium
downlight with floating ceramic
lampholder in white

Dia 100mm **Depth** 60mm

Cut - out 95mm

12 volt 1 x 50 Watt Max MR16



B

B Rotating Twist Front Gimble Round Downlight

sku **160226**
kit **160118***

gimble diecast aluminium
downlight with floating ceramic
lampholder in polished brass

Dia 100mm **Depth** 60mm

Cut - out 95mm

12 volt 1 x 50 Watt Max MR16



C

C Rotating Twist Front Gimble Round Downlight

sku **160227**
kit **160121***

gimble diecast aluminium
downlight with floating ceramic
lampholder in brushed chrome

Dia 100mm **Depth** 60mm

Cut - out 95mm

12 volt 1 x 50 Watt Max MR16

* Kits include Lucci TL060M electronic transformer & 5000 hour globe.



Twist Front Square Downlight

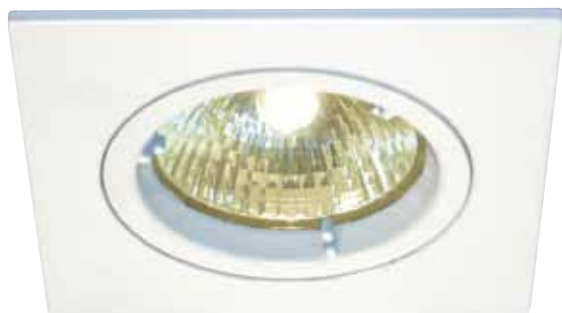
Compatible with
Lucci Retro-fit
protekta heatsink



A



B



C



D

A
**Rotating Twist Front Square
Gimble Downlight**

sku **160220**
kit **160209***

gimble diecast aluminium
downlight with floating
ceramic lampholder in white
W 95mm **L** 95mm
Depth 60mm
Cut - out 93mm
12 volt 1 x 50 Watt Max MR16

B
**Rotating Twist Front Square
Gimble Downlight**

sku **160221**
kit **160207***

gimble diecast aluminium
downlight with floating
ceramic lampholder in
brushed chrome
W 95mm **L** 95mm
Depth 60mm
Cut - out 93mm
12 volt 1 x 50 Watt Max MR16

C
**Twist Front Fixed Square
Downlight**

sku **160222**
kit **160208***

fixed diecast aluminium
downlight with floating
ceramic lampholder
in white
W 95mm **L** 95mm
Depth 60mm
Cut - out 70mm
12 volt 1 x 50 Watt Max MR16

D
**Twist Front Fixed Square
Downlight**

sku **160223**
kit **160206***

fixed diecast aluminium
downlight with floating
ceramic lampholder in
brushed chrome
W 95mm **L** 95mm
Depth 60mm
Cut - out 70mm
12 volt 1 x 50 Watt Max MR16

* Kits include Lucci TLO60M electronic transformer & 5000 hour globe.

Comparda Mini Downlight



A



B



C



D

A
Comparda Mini GU10
Downlight
sku 170170

low energy, low glare
GU10 gimble downlight in white
Dia 128mm **Depth** 120mm
Cut-out 110mm
1 x 9W or 11W GU10
(globe not included)

B
Comparda Mini GU10
Downlight
sku 170171

low energy, low glare GU10
gimble downlight in silver
Dia 128mm **Depth** 120mm
Cut-out 110mm
1 x 9W or 11W GU10
(globe not included)

C
Comparda Mini GX53
Downlight
sku 170172

low energy, low glare GX53
fixed downlight in white
Dia 136mm **Depth** 62mm
Cut-out 110mm
1 x 9W, 11W or 13W GX53
(globe not included)

D
Comparda Mini GX53
Downlight
sku 170173

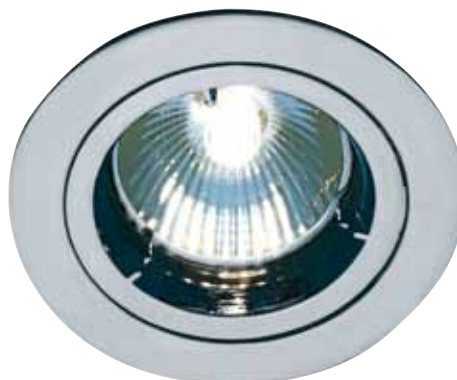
low energy, low glare GX53
fixed downlight in silver
Dia 136mm **Depth** 62mm
Cut-out 110mm
1 x 9W, 11W or 13W GX53
(globe not included)

Round Twist Downlight

Compatible with
Lucci Retro-fit
protektka heatsink



A



B



C



D

A
Twist Fixed Downlight
sku **160404**
kit **160062***

fixed diecast aluminium
downlight with floating ceramic
lampholder in white

Dia 80mm **Depth** 60mm

Cut - out 75mm

12V 1 x 50 Watt Max MR16

B
Twist Fixed Downlight
sku **160406**
kit **160072***

fixed diecast aluminium
downlight with floating
ceramic lampholder in
brushed chrome

Dia 80mm **Depth** 60mm

Cut - out 75mm

12V 1 x 50 Watt Max MR16

C
Twist Fixed Downlight
sku **160407**
kit **160073***

fixed diecast aluminium
downlight with floating
ceramic lampholder in
polished chrome

Dia 80mm **Depth** 60mm

Cut - out 75mm

12V 1 x 50 Watt Max MR16

D
Twist Fixed Downlight
sku **160405**
kit **160067***

fixed diecast aluminium
downlight with floating
ceramic lampholder in
polished brass

Dia 80mm **Depth** 60mm

Cut - out 75mm

12V 1 x 50 Watt Max MR16

* Kits include Lucci TL060M electronic transformer & 5000 hour globe.

Round Twist Front Downlight

Compatible with
Lucci Retro-fit
protektka heatsink



A



B



C



D

A
Twist Front Gimble Downlight
sku **160409**
kit **160103***

gimble diecast aluminium
downlight with floating ceramic
lampholder in white

Dia 100mm **Depth** 60mm

Cut-out 90mm

12 volt 1 x 50 Watt Max MR16

B
Twist Front Gimble Downlight
sku **160411**
kit **160104***

gimble diecast aluminium
downlight with floating ceramic
lampholder in brushed chrome

Dia 100mm **Depth** 60mm

Cut-out 90mm

12 volt 1 x 50 Watt Max MR16

C
Twist Front Gimble Downlight
sku **160408**
kit **160107***

gimble diecast aluminium
downlight with floating ceramic
lampholder in polished chrome

Dia 100mm **Depth** 60mm

Cut-out 90mm

12 volt 1 x 50 Watt Max MR16

D
Twist Front Gimble Downlight
sku **160410**
kit **160111***

gimble diecast aluminium
downlight with floating ceramic
lampholder in polished brass

Dia 100mm **Depth** 60mm

Cut-out 90mm

12 volt 1 x 50 Watt Max MR16

* Kits include Lucci TL060M electronic transformer & 5000 hour globe.



Envirolux

Low energy lighting

Compatible with
Lucci Retro-fit
protektka heatsink



A

A
Envirolux Twist Front Gimble Downlight
sku **160445**

twist front gimble 240V downlight frame
only in white

Dia 102mm **Depth** 105mm

Cut-out 93mm

1 x 50W GU10 or CFL GU10
(globe not included)



B

B
Envirolux Twist Front Gimble Downlight
sku **160446**

twist front gimble 240V downlight
frame only in polished brass

Dia 102mm **Depth** 105mm

Cut-out 93mm

1 x 50W GU10 or CFL GU10
(globe not included)



C

C
Envirolux Twist Front Gimble Downlight
sku **160447**

twist front gimble 240V downlight
frame only in brushed chrome

Dia 102mm **Depth** 105mm

Cut-out 93mm

1 x 50W GU10 or CFL GU10
(globe not included)

Envirolux Twist Front Fixed Downlight

Envirolux

Low energy lighting

Compatible with
Lucci Retro-fit
protekta heatsink



A

A
Envirolux Twist Front Downlight
sku **160435**

twist front fixed 240V downlight
frame only in white
Dia 80mm **Depth** 105mm
Cut-out 73mm
1 x 50W GU10 or CFL GU10
(globe not included)



B

B
Envirolux Twist Front Downlight
sku **160436**

twist front fixed 240V downlight
frame only in polished brass
Dia 80mm **Depth** 105mm
Cut-out 73mm
1 x 50W GU10 or CFL GU10
(globe not included)



C

C
Envirolux Twist Front Downlight
sku **160437**

twist front fixed 240V downlight frame
only in brushed chrome
Dia 80mm **Depth** 105mm
Cut-out 73mm
1 x 50W GU10 or CFL GU10
(globe not included)

Envirolux

Low energy lighting



A

A
Envirolux CNC Front Round Downlight
sku **160269**

Low energy, low glare round downlight with CNC aluminium front and frosted glass in white

Dia 107mm **Depth** 153mm

Cut-out 88mm

1 x 15W CFL ES
(globe not included)



B

B
Envirolux CNC Front Round Downlight
sku **160268**

Low energy, low glare round downlight with CNC aluminium front and frosted glass.

Dia 107mm **Depth** 153mm

Cut-out 88mm

1 x 15W CFL ES
(globe not included)



C

C
Envirolux Tilt CNC
sku **160265**
kit **160264***

IP44 sealed splash proof aluminium downlight

Dia 90mm **Depth** 110mm

Cut - out 75mm

12 volt 1 x 50 Watt Max MR16

*Kit includes electronic transformer and globe.

Envirolux CNC Downlight

Envirolux

Low energy lighting



A



B

A
Envirolux CNC Round Downlight
sku **160266**

GU10 low glare round CNC aluminium downlight
Dia 127mm **Depth** 65mm
1 x 11W GZ10 CFL
(globe not included)

B
Envirolux CNC Square Downlight
sku **160267**

GU10 low glare square CNC aluminium downlight
L 128mm **W** 128mm **Depth** 65mm
1 x 11W GZ10 CFL
(globe not included)

Envirolux Triton Downlight

Envirolux

Low energy lighting



A



B

A
Envirolux Triton
sku **170273**

low energy round downlight in white with frosted glass to reduce glare
Dia 150mm **Depth** 95mm
Cut-out 130mm
1 x 20W ES CFL Max
(globe not included)

B
Envirolux Triton
sku **170274**

low energy round downlight in brushed chrome with frosted glass to reduce glare
Dia 150mm **Depth** 95mm
Cut-out 130mm
1 x 20W ES CFL Max
(globe not included)

Envirolux

Low energy lighting



A



B



C



D

A
Envirolux Neptune
sku 170277

low energy square downlight
in white with frosted glass to
reduce glare

L 130mm **W** 130mm

Depth 70mm

Cut-out 115 x 115mm

1 x 15W ES CFL Max
(globe not included)

B
Envirolux Neptune
sku 170278

low energy square downlight
in brushed chrome with
frosted glass to reduce glare

L 130mm **W** 130mm

Depth 70mm

Cut-out 115 x 115mm

1 x 15W ES CFL Max
(globe not included)

C
Envirolux Neptune
sku 170275

low energy round downlight
in white with frosted glass
to reduce glare

Dia 150mm **Depth** 88mm

Cut-out 135mm

1 x 20W ES CFL Max
(globe not included)

D
Envirolux Neptune
sku 170276

low energy round downlight
in brushed chrome with
frosted glass to reduce glare

Dia 150mm **Depth** 88mm

Cut-out 135mm

1 x 20W ES CFL Max
(globe not included)



A



B



C



D

A
Envirolux Protekta
Downlight
sku 180345

low energy round fixed
downlight kit with protekta
heatsink in white
Dia 82mm **Depth** 128mm
Cut-out 72mm
1 x 11W GU10 CFL or 50W
GU10 Halogen
(11 watt GU10 CFL globe
included)

B
Envirolux Protekta
Downlight
sku 180347

low energy round fixed
downlight kit with protekta
heatsink in brushed chrome
Dia 82mm **Depth** 128mm
Cut-out 72mm
1 x 11W GU10 CFL or 50W
GU10 Halogen
(11 watt GU10 CFL globe
included)

C
Envirolux Protekta
Gimble Downlight
sku 180346

low energy round gimble
downlight kit with protekta
heatsink in white
Dia 95mm **Depth** 130mm
Cut-out 85mm
1 x 11W GU10 CFL or 50W
GU10 Halogen
(11 watt GU10 CFL globe
included)

D
Envirolux Protekta
Gimble Downlight
sku 180348

low energy round gimble
downlight kit with protekta
heatsink in brushed chrome
Dia 95mm **Depth** 130mm
Cut-out 85mm
1 x 11W GU10 CFL or 50W
GU10 Halogen
(11 watt GU10 CFL globe
included)



LEDlux

Super efficient lighting



A

A
LEDlux Downlight
sku **170180**

LED gimble 15deg downlight in silver
Dia 80mm **Depth** 45mm
Cut-out 69mm
12 Volt 3 x 1.2W OSRAM LED warm white
(transformer included, average rated life:
50,000 hours)



B

B
LEDlux Downlight
sku **170183**

LED gimble 15deg downlight in white
Dia 80mm **Depth** 94.5mm
Cut-out 69mm
12 Volt 3 x 3W OSRAM LED warm white
(transformer included, average rated life:
50,000 hours)



C

C
LEDlux Downlight
sku **170181**

LED gimble 15deg downlight in silver
Dia 80mm **Depth** 94.5mm
Cut-out 69mm
12 Volt 3 x 3W OSRAM LED warm white
(transformer included, average rated life:
50,000 hours)

LEDlux

Super efficient lighting



A



B

A
LEDlux Downlight
sku **170182**

LED gimble 35deg downlight in silver
Dia 80mm **Depth** 94.5mm
Cut-out 69mm
12 Volt 3 x 3W OSRAM LED warm white
(transformer included, average rated life:
50,000 hours)

B
LEDlux Downlight
sku **170184**

LED gimble 35deg downlight in white
Dia 80mm **Depth** 94.5mm
Cut-out 69mm
12 Volt 3 x 3W OSRAM LED warm white
(transformer included, average rated life:
50,000 hours)



LEDlux

Super efficient lighting



A

A
LEDlux Conversion Plate
sku 170185

LEDlux downlight conversion plate in silver
Dia 100mm **Depth** 20mm
Cut-out 90mm
(downlight sold separately)



B

B
LEDlux Conversion Plate
sku 170186

LEDlux downlight conversion plate in white
Dia 100mm **Depth** 20mm
Cut-out 90mm
(downlight sold separately)



C

C
LEDlux Conversion Plate
sku 170187

LEDlux downlight conversion plate with springs in silver
Dia 100mm **Depth** 20mm
Cut-out 90mm
(downlight sold separately)

*Conversion plates are used to retro fit the LEDlux downlight into a standard 90mm downlight hole.

FOZZ®

ENERGY SAVING LIGHTING



A



B

A

Fozz Vog Downlight

sku **180802** - brushed chrome

sku **180800** - white

GU10 fixed downlight in
brushed chrome

Dia 78mm **Depth** 110mm

Cut-out 65mm

1 x 11W GU10 warm white
(Megaman globe included)

B

Fozz Vog Downlight

sku **180805** - brushed chrome

sku **180803** - white

GU10 gimble downlight in
brushed chrome

Dia 82mm **Depth** 110mm

Cut-out 75mm

1 x 11W GU10 warm white
(Megaman globe included)

*Fozz Downlights are designed using low energy globes and meet the requirements to be fully covered by insulation without the risk of fire or damage to the fitting. Must be installed by a licensed electrician and use in accordance with instructions provided.

FOZZ[®]

ENERGY SAVING LIGHTING



A



B

A
Fozz Opera Fixed Downlight
sku **180810**

GU10 fixed downlight in white, IP64
Dia 100mm **Depth** 110mm
Cut-out 80mm
1 x 11W GU10 warm white
(Megaman globe included)

B
Fozz Opera Fixed Downlight
sku **180812**

GU10 fixed downlight in
brushed chrome, IP64
Dia 100mm **Depth** 110mm
Cut-out 80mm
1 x 11W GU10 warm white
(Megaman globe included)

*Fozz Downlights are designed using low energy globes and meet the requirements to be fully covered by insulation without the risk of fire or damage to the fitting. Must be installed by a licensed electrician and use in accordance with instructions provided.

FOZZ®

ENERGY SAVING LIGHTING



A



B



C



D

A
Fozz Cronos Fixed Downlight
 sku 180815

GX53 fixed downlight in white
Dia 111.5mm **Depth** 65mm
Cut-out 95-98mm
 1 x 13W GX53 warm white (Megaman globe included)

B
Fozz Cronos Fixed Downlight
 sku 180817 - brushed chrome
 sku 180816 - chrome

GX53 fixed downlight in brushed chrome
Dia 111.5mm **Depth** 65mm
Cut-out 95-98mm
 1 x 13W GX53 warm white (Megaman globe included)

C
Fozz Planet Fixed Downlight
 sku 180825

GX53 fixed downlight with reflector in white, IP64 glass fronted splash proof fitting
Dia 150mm **Depth** 85mm
Cut-out 135mm
 1 x 13W GX53 Hi Lite warm white (Megaman globe included)

D
Fozz Planet Fixed Downlight
 sku 180826

GX53 fixed downlight with reflector in silver, IP64 glass fronted splash proof fitting
Dia 150mm **Depth** 85mm
Cut-out 135mm
 1 x 13W GX53 Hi Lite warm white (Megaman globe included)

*Fozz Downlights are designed using low energy globes and meet the requirements to be fully covered by insulation without the risk of fire or damage to the fitting. Must be installed by a licensed electrician and use in accordance with instructions provided.



A



B

A
Starlight Mini Downlight

sku **160860**
kit **160862*** 1 light kit
kit **160864*** 3 light kit

12V 20 Watt mini downlight in white

Dia 35mm **Depth** 37mm

Cut-out 26mm

1 x 20W G4 MAX

*Kits include Lucci TL060M electronic transformer & bi pin G4 12V globe

B
Starlight Mini Downlight

sku **160861**
kit **160863*** 1 light kit
kit **160865*** 3 light kit

12V 20 Watt mini downlight in brushed chrome

Dia 35mm **Depth** 37mm

Cut-out 26mm

1 x 20W G4 MAX

*Kits include Lucci TL060M electronic transformer & bi pin G4 12V globe

Project R80 Downlight



A



B

A
Project R80 Downlight
sku **170163**

R80 recessed downlight in white
Dia 125mm **Depth** 160mm
Cut-out 90mm
1 x 15W R80 CFL MAX
(reflector CFL bulb included)

B
Project R80 Downlight
sku **170162**

R80 recessed downlight in brushed chrome
Dia 125mm **Depth** 160mm
Cut-out 90mm
1 x 15W R80 CFL MAX
(reflector CFL bulb included)

Recessed Downlight



A



B

A
R80 Recessed Downlight
sku **170160**

R80 recessed downlight in white
Dia 124mm **Depth** 127mm
Cut-out 90mm
1 x 60W R80 or Energy Saving Globe
(globe not included)

B
R80 Recessed Downlight
sku **170161**

R80 recessed downlight in brushed chrome
Dia 124mm **Depth** 127mm
Cut-out 90mm
1 x 60W R80 or Energy Saving Globe
(globe not included)



A



B



C



D

A
Conversion Plate 6 Inch
 sku **160630** - white
 sku **160631** - brushed chrome
 sku **160632** - brass

suits fixed downlights
Dia 170mm **Depth** 42mm
Cut - out 110mm
 (downlight not included)

B
Conversion Plate 6 Inch
 sku **160636** - white
 sku **160637** - brushed chrome
 sku **160638** - brass

suits gimble downlights
Dia 170mm **Depth** 40mm
Cut - out 130mm
 (downlight not included)

C
Conversion Plate 8 Inch
 sku **160633** - white
 sku **160634** - brushed chrome
 sku **160635** - brass

suits fixed downlights
Dia 210mm **Depth** 42mm
Cut - out 110mm
 (downlight not included)

D
Conversion Plate 8 Inch
 sku **160639** - white
 sku **160640** - brushed chrome
 sku **160641** - brass

suits gimble downlights
Dia 210mm **Depth** 40mm
Cut - out 130mm
 (downlight not included)

* Conversion plates are required when you are trying to retro-fit a smaller downlight into a larger pre-existing hole, saves plastering and painting.

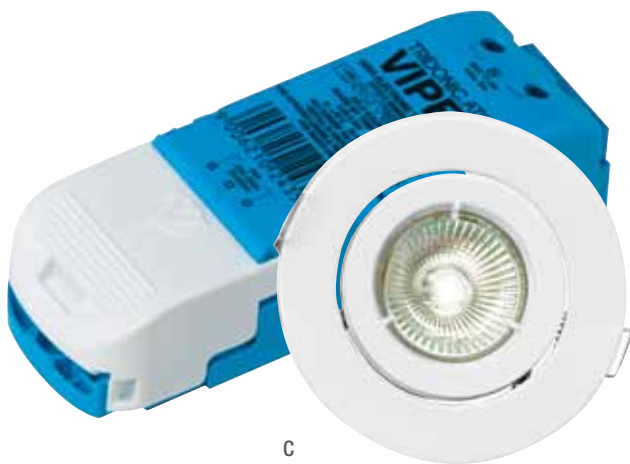
Budget Downlight Kit



A



B



C



D

A
**Twist Front Budget Fixed
Downlight Kit**
sku 160036

fixed diecast aluminium
downlight with floating ceramic
lampholder in white
Dia 80mm Depth 60mm
Cut - out 70mm
12V 1 x 50 Watt Max

B
**Twist Front Budget Fixed
Downlight Kit**
sku 160033

fixed diecast aluminium
downlight with floating ceramic
lampholder in brushed chrome
Dia 80mm Depth 60mm
Cut - out 70mm
12V 1 x 50 Watt Max

C
**Twist Front Budget Gimble
Downlight Kit**
sku 160099

gimble diecast aluminium
downlight with floating ceramic
lampholder in white
Dia 100mm Depth 65mm
Cut - out 95mm
12V 1 x 50 Watt Max

D
**Twist Front Budget Gimble
Downlight Kit**
sku 160097

gimble diecast aluminium
downlight with floating ceramic
lampholder in brushed chrome
Dia 100mm Depth 65mm
Cut - out 95mm
12V 1 x 50 Watt Max

*Kits include 60VA electronic transformer with plug and lead and halogen globe

Isolite Transformer Guard / Isolite Transformer Isolator



A



B

A
Isolite Downlight Guard
sku **160160**

isolite retro fit protecting device
for low voltage downlight
Depth 150mm **W** 145mm **L** 160mm

B
Isolite Transformer Isolator
sku **160162**

isolite protecting device for
low voltage transformers
Depth 140mm **W** 110mm **L** 135mm

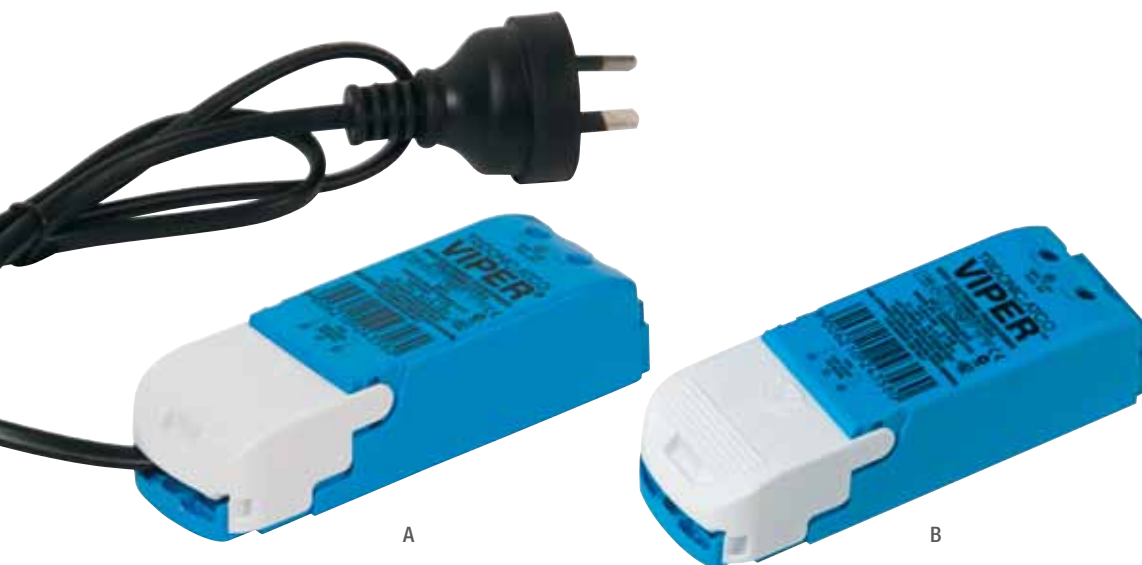
ATCO Iron Core Transformer



ATCO TM50 Iron Core 50VA
Transformer
sku **160543**

black
H 37mm **W** 50mm **L** 260mm
240 / 12 Volt 50VA

ATCO Viper Transformer



A
ATCO Viper 60VA Transformer with plug and lead
sku 160586

blue
H 29mm W 40mm L 119mm
1.2m core lead set
240 / 12 Volt 60VA

B
ATCO Viper 60VA Transformer
sku 160585

blue
H 29mm W 40mm L 119mm
240 / 12 Volt 60VA

- 3 year IN HOME warranty
- Suitable for dimming with approved leading/trailer edge dimmer
- Best compatibility to CBUS systems (input capacitance 33nF)
- Soft start feature – which gradually introduces the power to the lamp resulting in extended lamp life

ATCO LED Transformer



ATCO LED Transformer
sku 160582

white
H 18mm W 35mm L 77mm
240 / 12 volt
1 - 10VA DC suit LED



A



B

A
Lucci 105VA TL105
Transformer
 sku **160592** - 105VA

white
 H 29mm W 38mm L 168mm
 240 / 12 Volt
 20W/105W

B
Lucci 105VA TL150
Transformer
 sku **160594** - 150VA

white
 H 29mm W 38mm L 168mm
 240 / 12 Volt
 20W/150W

- 12 volt 60VA
- 3 year IN HOME warranty
- Suitable for dimming with approved leading or trailing edge dimmer
- Suitable for CBUS systems (input capacitance 68nF)
- Soft start feature – which gradually introduces the power to the lamp resulting in extended lamp life

Lucci Electronic Transformer



Lucci 60VA Electronic TL060M Transformer sku 160590

black
H 29mm W 38mm L 136mm
240 Volt 60VA

- 12 volt 60VA
- 3 year IN HOME warranty
- Suitable for dimming with approved leading or trailing edge dimmer
- Suitable for CBUS systems (input capacitance 68nF)
- 4 pole terminals on primary side for easy looping
- 6 pole terminals on secondary side for easy wiring when using 3 lamps
- Soft start feature – which gradually introduces the power to the lamp resulting in extended lamp life

Lucci ATCO Possum Transformer



A Lucci ATCO 60VA Possum Transformer With Plug & Lead sku 160584

blue / yellow
H 29mm W 50mm L 102mm
240 / 12 Volt 60VA
1.2m Core lead set

B Lucci ATCO 60VA Possum Transformer sku 160579

blue / yellow
H 29mm W 50mm L 102mm
240 / 12 Volt 60VA

- 12 Volt 60VA
- 5 year IN HOME warranty
- Australian Made
- Suitable for dimming with approved leading/trailer edge dimmer
- Best compatibility to CBUS systems (input capacitance 33nF)
- Soft start feature – which gradually introduces the power to the lamp resulting in extended lamp life

Aquatran Transformer



Aquatran

sku **160512** - 200VA (pictured)

sku **160510** - 50AV

sku **160511** - 100VA

sku **160513** - 300VA

sku **160514** - 400VA

heavy duty copper wound 12 volt transformer for garden lighting. DIY plug in unit.

- IP47
- rugged polycarbonate enclosure
- auto resetting thermal cutout

Lamp Holder Assembly



240V GU10

Lamp Holder Assembly

sku **160326**

The 240 volt GU10 assembly is required to turn your existing 12 volt halogen downlights to 240 volt and therefore allowing the use of low energy globes.

